

JAPANESE BUSINESS FACILITIES IN 10 MIDWEST STATES: 2016 SURVEY

The Consulate-General of Japan in Chicago conducts an annual survey to determine the Japanese business presence in Illinois, Indiana, Iowa, Kansas, Minnesota, Missouri, Nebraska, North Dakota, South Dakota, and Wisconsin. The ten-state area is under the jurisdiction of the Consulate.

In 2016, a total of 1,389 Japanese business facilities were counted in the survey. Retail locations are excluded. Data is as of October 1, 2016.

Source: Consulate-General of Japan in Chicago

Note: Japanese business facilities include those which are ultimately 10% or more owned by a Japanese company or national.

TABLE 1
 NUMBER OF JAPANESE BUSINESS FACILITIES BY STATE AND NUMBER
 2016

YEAR	IA	IL	IN	KS	MN	MO	ND	NE	SD	WI	10 STATES	
											Total	%
2006	51	682	238	31	70	77	4	38	7	54	1,252	
2011	56	627	237	41	82	81	6	44	10	60	1,244	
2012	51	614	241	45	79	83	5	40	9	57	1,224	-1.6
2013	62	603	254	53	81	85	15	55	9	58	1,275	4.2
2014	69	618	265	56	82	106	19	61	8	67	1,351	6.0
2015	70	611	270	56	80	96	19	62	8	63	1,335	-1.2
2016	72	630	280	58	88	104	20	65	9	63	1,389	4.0
16/15%	2.9	3.1	3.7	3.6	10.0	8.3	5.3	4.8	12.5	0.0	4.0	
16/11%	28.6	0.5	18.1	41.5	7.3	28.4	233.3	47.7	-10.0	5.0	11.7	
16/06%	41.2	-7.6	17.6	87.1	25.7	35.1	400.0	71.1	28.6	16.7	10.9	

%; Percent change over previous period.

Note: Total Japanese business facilities includes each location for a particular company in the 10-state region. Data from previous years was revised in March 2017.

BUSINESS FACILITY NUMBER

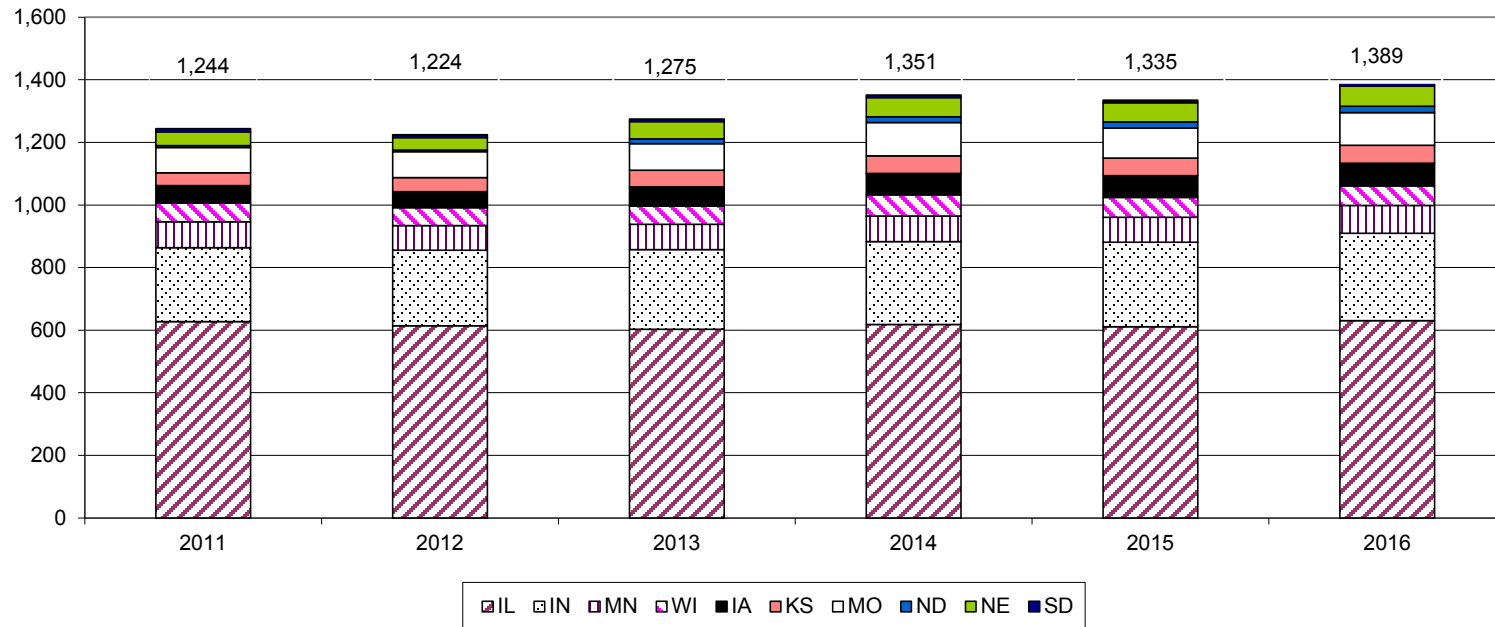


TABLE 2
JAPANESE BUSINESS FACILITY EMPLOYMENT BY TYPE AND YEAR
2016

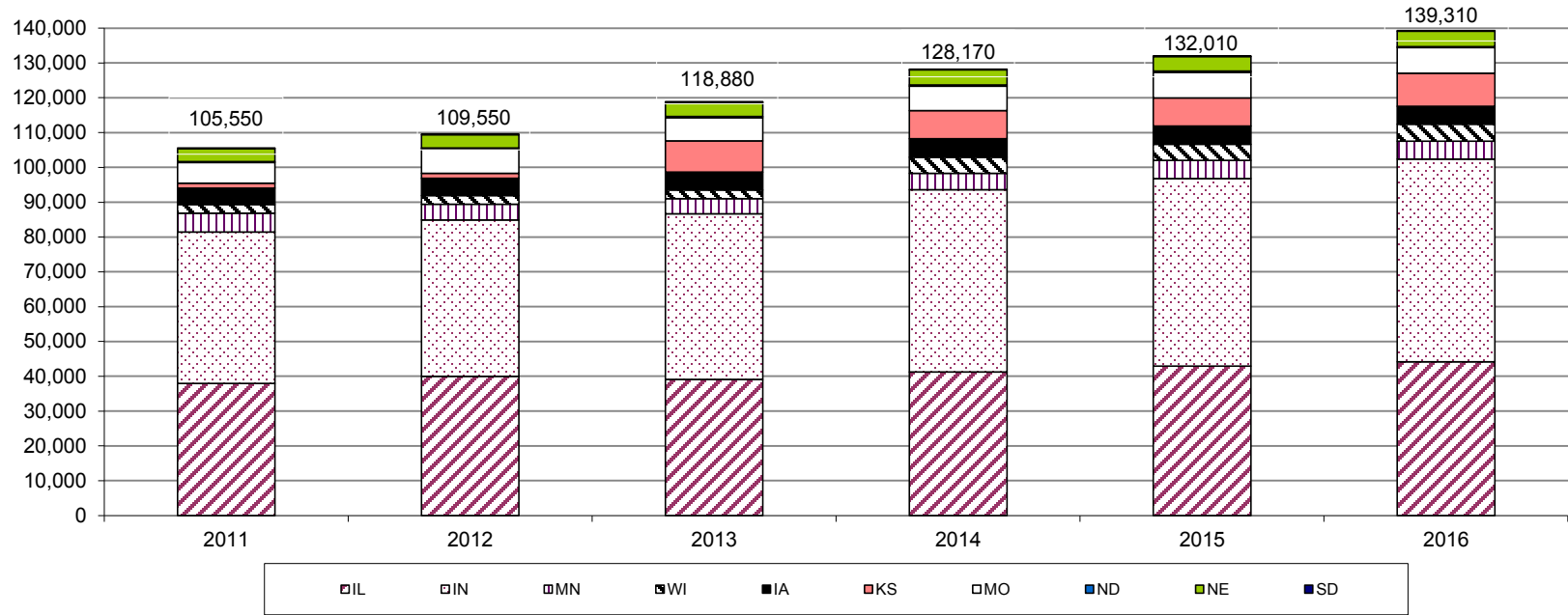
YEAR	IA	IL	IN	KS	MN	MO	ND	NE	SD	WI	10 STATES	
											Total	%
TOTAL EMPLOYEES*												
2011	4,770	37,940	43,470	1,380	5,440	5,980	260	3,670	200	2,450	105,550	
2012	4,990	39,980	44,890	1,420	4,560	7,050	230	3,760	200	2,490	109,550	3.8
2013	5,140	39,130	47,520	8,960	4,390	6,670	310	4,110	170	2,490	118,880	8.5
2014	5,360	41,210	52,360	8,060	4,720	7,030	360	4,300	200	4,590	128,170	7.8
2015	5,240	42,900	53,930	8,050	5,170	7,330	340	4,190	190	4,670	132,010	3.0
2016	5,170	44,160	58,180	9,500	5,150	7,360	320	4,410	180	4,880	139,310	5.5
16/15%	-1.3	2.9	7.9	17.9	-0.5	0.4	-4.7	5.2	-3.2	4.4		5.5
16/11%	8.3	16.4	33.8	586.6	-5.4	23.1	26.7	20.3	-7.1	98.8	32.0	
LOCAL EMPLOYEES HIRED IN THE U.S.*												
2011	4,740	36,710	42,750	1,350	5,370	5,920	260	3,630	190	2,420	103,350	
2012	4,940	38,720	44,200	1,390	4,480	7,000	230	3,730	200	2,450	107,330	3.9
2013	5,090	37,880	46,840	8,930	4,330	6,620	310	4,050	170	2,450	116,670	8.7
2014	5,320	39,890	51,610	8,030	4,590	6,960	360	4,240	190	4,550	125,740	7.8
2015	5,190	41,460	53,150	8,010	5,110	7,260	340	4,140	190	4,640	129,490	3.0
2016	5,120	42,680	57,350	9,450	5,090	7,310	320	4,360	180	4,840	136,690	5.6
16/15%	-1.4	2.9	7.9	18.0	-0.5	0.6	-4.7	5.2	-3.2	4.4		5.6
16/11%	8.0	16.3	34.1	597.8	-5.4	23.5	26.7	20.0	-6.2	100.1	32.3	
JAPANESE EMPLOYEES ASSIGNED FROM JAPAN												
2011	30	1,230	710	30	70	60	0	40	0	40	2,200	
2012	40	1,260	690	30	80	50	0	40	0	40	2,220	0.8
2013	50	1,240	680	30	70	50	0	50	0	30	2,210	-0.6
2014	50	1,320	750	30	70	70	0	50	0	40	2,370	7.3
2015	50	1,440	780	50	60	70	0	50	0	40	2,530	6.8
2016	50	1,480	830	50	60	50	0	50	0	40	2,620	3.6
16/15%	6.1	3.0	6.4	4.4	0.0	-16.9	0.0	4.0	0.0	5.6		3.6
16/11%	62.5	20.5	16.3	62.1	-7.2	-8.5	0.0	48.6	0.0	8.6	18.8	
ACTUAL MANUFACTURING EMPLOYEES*												
2011	2,440	12,260	30,020	550	2,290	3,060	130	2,510	70	930	54,260	
2012	2,520	13,880	31,450	510	1,350	3,190	130	2,660	60	1,090	56,840	4.8
2013	2,660	13,770	33,650	440	1,220	3,230	120	2,580	50	1,150	58,880	3.6
2014	3,000	15,160	36,190	430	1,260	3,050	110	2,620	50	1,950	64,120	8.9
2015	2,500	15,970	37,470	440	1,410	3,420	110	2,560	50	1,970	66,190	3.2
2016	2,420	15,150	40,720	420	1,400	3,390	110	2,640	50	2,070	68,380	3.3
16/15%	-3.4	-5.1	8.7	-2.5	-0.5	-0.8	0.0	3.2	-4.0	5.2		3.3
16/11%	-0.9	23.6	35.7	-22.8	-38.8	11.1	-18.9	5.2	-29.4	121.6	26.0	

*: The above categories include part-time employment. Actual Manufacturing Employees indicates the number of employees who are involved directly in the manufacturing process.

#: Change over previous year.

Note: Due to rounding, the sum of each column may not equal the column total. The percent comparison is based upon the actual numbers. Data from previous years was revised in March 2017.

TOTAL EMPLOYMENT



ACTUAL MANUFACTURING EMPLOYMENT

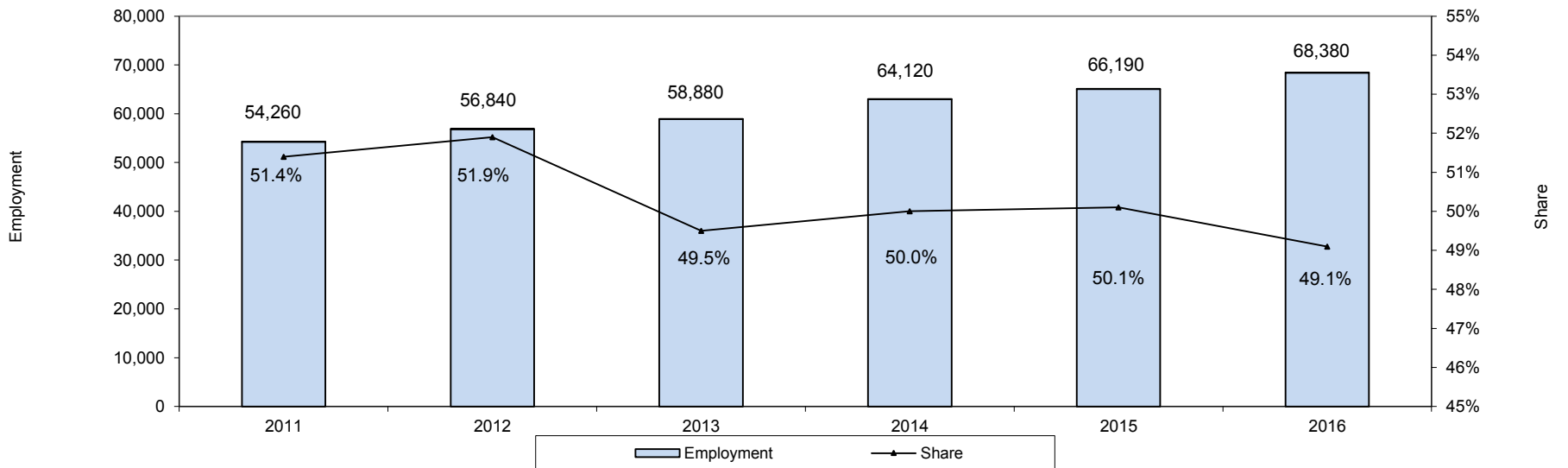


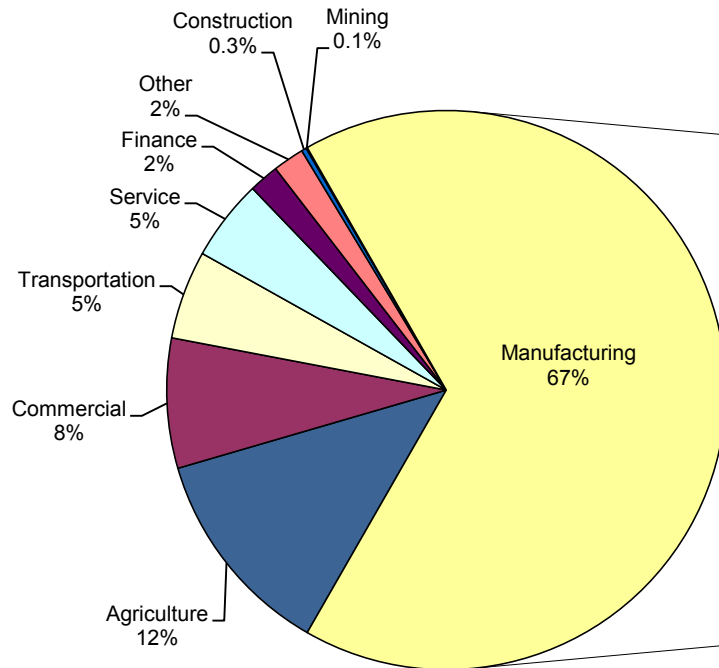
TABLE 3
NUMBER OF JAPANESE BUSINESS FACILITIES BY SECTOR
2016

INDUSTRY	IA	IL	IN	KS	MN	MO	ND	NE	SD	WI	Total	10 STATES		
												NC	16/15%	% of Total
Agriculture, Forestry and Fisheries	15	59	27	9	9	16	10	16	2	6	169	29	20.7	12.2
Mining	0	0	0	1	0	0	0	0	0	0	1	0	0.0	0.1
Construction	0	2	1	0	1	0	0	0	0	0	4	0	0.0	0.3
Manufacturing	49	392	218	39	59	62	10	44	7	46	926	18	2.0	66.7
Motor Vehicles and Parts	7	51	104	0	2	11	0	4	0	6	185	4	2.2	13.3
Electronics	0	70	14	3	8	4	0	5	1	3	108	2	1.9	7.8
Machine Tools	1	46	4	0	2	1	0	1	0	3	58	2	3.6	4.2
Precision Instruments	3	22	7	10	8	5	0	2	0	5	62	-2	-3.1	4.5
Other Machinery	4	35	14	2	5	2	2	0	0	5	69	0	0.0	5.0
Tire and Rubber	5	9	4	0	0	0	0	0	0	0	18	0	0.0	1.3
Metal and Steel	0	15	14	0	3	1	0	0	0	3	36	1	2.9	2.6
Food	5	16	1	0	4	3	0	2	0	3	34	3	9.7	2.4
Chemical	21	60	30	22	16	27	8	27	6	14	231	4	1.8	16.6
Pharmaceutical	1	12	0	0	1	0	0	0	0	1	15	1	7.1	1.1
Other	2	56	26	2	10	8	0	3	0	3	110	3	2.8	7.9
Actual Manufacturing*	16	116	130	8	20	15	1	10	1	17	334	12	3.7	24.0
Transportation and Warehouse	1	44	11	1	5	6	0	1	0	2	71	0	0.0	5.1
Service	2	36	7	2	7	5	0	0	0	6	65	4	6.6	4.7
Commercial Trade	3	67	13	3	2	11	0	4	0	1	104	0	0.0	7.5
Finance, Insurance and Real Estate	2	16	0	2	3	1	0	0	0	0	24	1	4.3	1.7
Other	0	14	3	1	2	3	0	0	0	2	25	2	8.7	1.8
Total	72	630	280	58	88	104	20	65	9	63	1,389	54	4.0	100.0

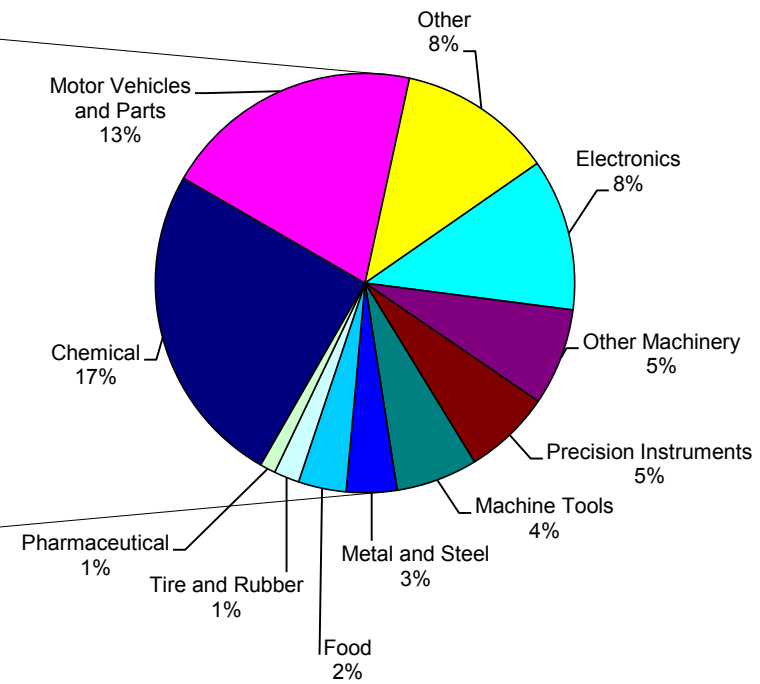
*: Actual Manufacturing indicates the number of business facilities that are involved directly in the manufacturing process.
NC: Net Change.
16/15%: Percent change over previous year.
Note: Data from previous years was revised in March 2017.

NUMBER OF JAPANESE BUSINESS FACILITIES
SHARE BY SECTOR
(10 States)

All Industries



Manufacturing



Note: Due to rounding, the sum of the sectors may not equal 100%.

TABLE 4
NUMBER OF JAPANESE BUSINESS FACILITIES BY SECTOR
2011 - 2016

INDUSTRY	10 STATES						
	2011	2012	2013	2014	2015	2016	16/15%
Agriculture, Forestry and Fisheries	44	64	130	156	140	169	20.7
Mining	1	1	1	1	1	1	0.0
Construction	4	3	3	4	4	4	0.0
Manufacturing	871	856	857	894	908	926	2.0
Motor Vehicles and Parts	181	176	180	178	181	185	2.2
Electronics	127	114	113	110	106	108	1.9
Machine Tools	49	52	52	56	56	58	3.6
Precision Instruments	67	77	75	63	64	62	-3.1
Other Machinery	81	80	74	70	69	69	0.0
Tire and Rubber	18	17	18	20	18	18	0.0
Metal and Steel	32	28	29	34	35	36	2.9
Food	31	30	31	31	31	34	9.7
Chemical	166	160	175	207	227	231	1.8
Pharmaceutical	13	14	12	12	14	15	7.1
Other	106	108	98	113	107	110	2.8
Actual Manufacturing*	336	311	311	323	325	334	3.7
Transportation and Warehouse	84	78	73	73	71	71	0.0
Service	77	73	69	69	61	65	6.6
Commercial Trade	115	104	99	109	104	104	0.0
Finance, Insurance and Real Estate	26	25	24	23	23	24	4.3
Other	22	20	19	22	23	25	8.7
Total	1,244	1,224	1,275	1,351	1,335	1,389	4.0

*: Actual Manufacturing indicates the number of business facilities that are involved directly in the manufacturing process.

NC: Net Change.

16/15%: Percent change over previous year.

Note: Data from previous years was revised in March 2017.

TABLE 5
TOTAL EMPLOYMENT BY SECTOR
2016

INDUSTRY	IA	IL	IN	KS	MN	MO	ND	NE	SD	WI	Total	10 STATES		
												NC	16/15 %	% of Total
Agriculture, Forestry and Fisheries	260	700	620	60	70	210	70	570	20	70	2,640	10	0.4	1.9
Mining	0	0	0	20	0	0	0	0	0	0	20	0	0.0	0.0
Construction	0	40	20	0	0	0	0	0	0	0	60	0	0.0	0.0
Manufacturing	4,280	37,450	56,530	2,500	4,590	6,390	250	3,810	160	4,580	120,550	7,520	6.6	86.5
Motor Vehicle/Parts	590	11,230	42,540	0	20	4,480	0	2,260	0	310	61,420	3,480	6.0	44.1
Electronics	0	4,660	1,750	120	760	10	0	230	100	250	7,870	450	6.0	5.6
Machine Tools	80	1,500	140	0	330	0	0	10	0	160	2,210	300	15.8	1.6
Prec. Instruments	140	2,660	760	100	1,030	510	0	110	0	370	5,680	-20	-0.4	4.1
Other Machinery	340	3,260	1,850	1,640	490	40	190	0	0	460	8,260	1,620	24.3	5.9
Tire and Rubber	1,880	1,370	1,870	0	0	0	0	0	0	0	5,120	50	0.9	3.7
Metal and Steel	0	500	2,330	0	290	80	0	0	0	2,150	5,340	330	6.5	3.8
Food	530	1,070	1,900	0	230	160	0	520	0	320	4,720	-220	-4.4	3.4
Chemical	480	2,680	1,150	370	310	580	60	270	60	350	6,300	650	11.6	4.5
Pharmaceutical	50	4,550	0	0	0	0	0	0	0	20	4,620	30	0.7	3.3
Other	200	3,980	2,260	270	1,150	540	0	410	0	200	9,010	850	10.4	6.5
Actual Manufacturing*	2,420	15,150	40,720	420	1,400	3,390	110	2,640	50	2,070	68,380	2,190	3.3	49.1
Transportation and Warehouse	10	1,390	640	0	50	20	0	0	0	0	2,110	-390	-15.6	1.5
Service	10	780	30	0	70	410	0	0	0	30	1,330	60	4.8	1.0
Commercial Trade	20	2,410	330	50	30	340	0	30	0	0	3,190	50	1.5	2.3
Finance, Insurance and Real Estate	600	930	0	50	60	0	0	0	0	0	1,630	40	2.6	1.2
Other	0	480	10	6,820	280	0	0	0	0	190	7,780	10	0.1	5.6
Total	5,170	44,160	58,180	9,500	5,150	7,360	320	4,410	180	4,880	139,310	7,300	5.5	100.0

*: Actual Manufacturing Employment indicates the number of employees who are involved directly in the manufacturing process.

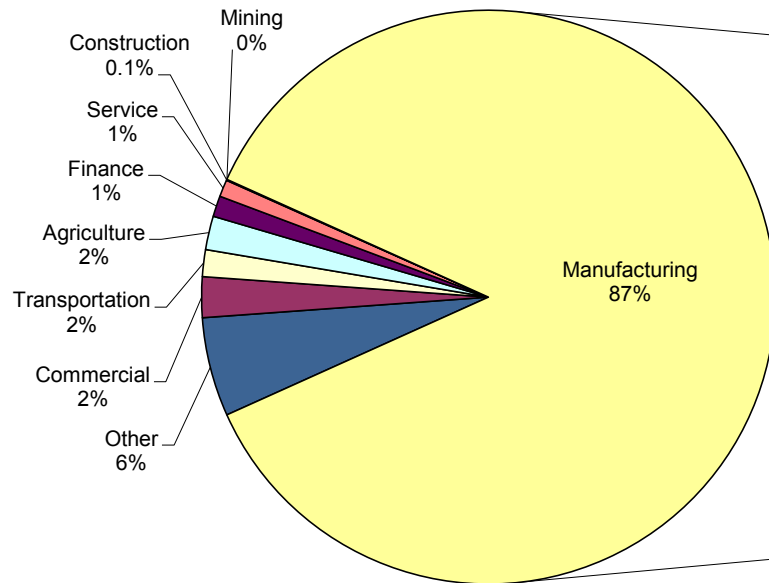
NC: Net Change.

16/15%: Percent change over previous year.

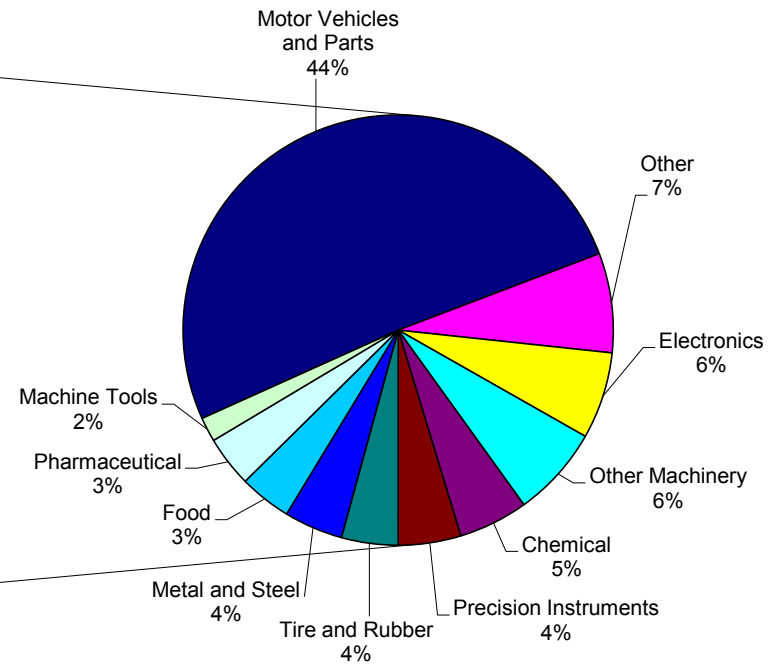
Note: Due to rounding, the sum of each column may not equal the column total. Data from previous years was revised in March 2017.

TOTAL EMPLOYMENT
SHARE BY SECTOR
(10 States)

All Industries



Manufacturing



Note: Due to rounding, the sum of the sectors may not equal 100%.

TOTAL EMPLOYMENT BY STATE AND SECTOR

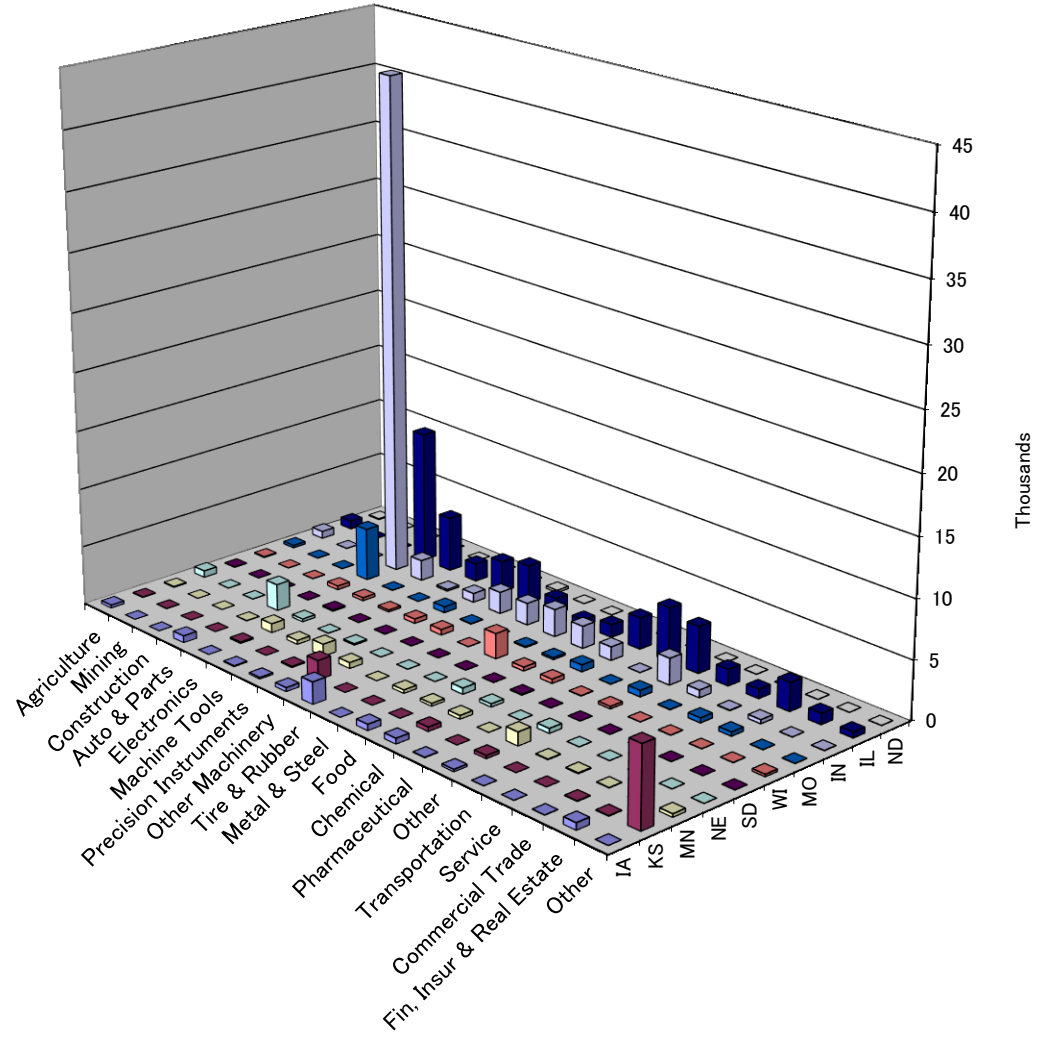


TABLE 6
TOTAL EMPLOYMENT BY SECTOR
2011 - 2016

INDUSTRY	10 STATES						
	2011	2012	2013	2014	2015	2016	16/15%
Agriculture, Forestry and Fisheries	690	870	2,030	2,670	2,630	2,640	0.4
Mining	20	20	20	20	20	20	0.0
Construction	30	20	20	40	60	60	0.0
Manufacturing	97,520	101,800	102,890	111,450	113,040	120,550	6.6
Motor Vehicles and Parts	49,560	52,620	54,210	57,610	57,940	61,420	6.0
Electronics	7,800	7,250	7,620	7,300	7,420	7,870	6.0
Machine Tools	1,510	1,410	1,370	1,510	1,910	2,210	15.8
Precision Instruments	4,900	5,460	5,700	5,550	5,700	5,680	-0.4
Other Machinery	6,520	7,510	7,530	7,030	6,640	8,260	24.3
Tire and Rubber	5,210	5,280	4,980	5,320	5,080	5,120	0.9
Metal and Steel	1,630	1,720	1,880	5,120	5,020	5,340	6.5
Food	3,900	4,490	4,520	4,960	4,930	4,720	-4.4
Chemical	4,410	4,530	5,100	5,200	5,650	6,300	11.6
Pharmaceutical	5,690	5,580	4,210	4,330	4,590	4,620	0.7
Other	6,390	5,980	5,790	7,530	8,160	9,010	10.4
Actual Manufacturing*	54,260	56,840	58,880	64,120	66,190	68,380	3.3
Transportation and Warehouse	1,310	1,170	1,150	1,390	2,490	2,110	-15.6
Service	1,610	1,520	1,410	1,350	1,270	1,330	4.8
Commercial Trade	2,700	2,180	1,960	2,460	3,140	3,190	1.5
Finance, Insurance and Real Estate	1,130	1,160	1,180	1,200	1,590	1,630	2.6
Other	550	810	8,230	7,590	7,770	7,780	0.1
Total	105,550	109,550	118,880	128,170	132,010	139,310	5.5

*: Actual Manufacturing Employment indicates the number of employees who are involved directly in the manufacturing process.

NC: Net Change.

16/15%: Percent change over previous year.

Note: Due to rounding, the sum of each column may not equal the column total. Data from previous years was revised in March 2017.

TABLE 7
NUMBER OF JAPANESE BUSINESS FACILITIES BY EMPLOYMENT SIZE
2016

EMPLOYEE NUMBER	IA	IL	IN	KS	MN	MO	ND	NE	SD	WI	Total	10 STATES	
												16/15	
												Actual	%
1 – 10	38	280	102	34	50	59	15	36	4	29	647	35	5.7
11 – 100	19	255	85	19	23	30	4	18	5	21	479	3	0.6
101 – 500	13	74	62	3	14	11	1	10	0	10	198	9	4.8
501 – 1000	1	17	21	0	1	3	0	0	0	3	46	5	12.2
1001 and Above	1	4	10	2	0	1	0	1	0	0	19	2	11.8
Total	72	630	280	58	88	104	20	65	9	63	1,389	54	4.0

NC: Net Change

?: Percent change over previous year.

Note: Data from previous years was revised in March 2017.

TABLE 8
NUMBER OF JAPANESE BUSINESS FACILITIES BY OWNERSHIP SHARE
2016

OWNERSHIP	IA	IL	IN	KS	MN	MO	ND	NE	SD	WI	Total	10 STATES	
												16/15	
												Actual	%
100%	65	598	245	56	80	97	18	63	9	59	1,290	53	4.3
50 – 99%	5	27	27	2	6	6	2	1	0	2	78	0	0.0
10 – 49%	2	5	8	0	2	1	0	1	0	2	21	1	5.0
Total	72	630	280	58	88	104	20	65	9	63	1,389	54	4.0

NC: Net Change.

?: Percent change over previous year.

Note: Business facilities with less than 10 percent Japanese ownership are excluded from the survey. Data from previous years was revised in March 2017.