

## **JAPANESE BUSINESS FACILITIES IN 10 MIDWEST STATES: 2018 SURVEY**

**The Consulate-General of Japan in Chicago conducts an annual survey to determine the Japanese business presence in Illinois, Indiana, Iowa, Kansas, Minnesota, Missouri, Nebraska, North Dakota, South Dakota, and Wisconsin. The ten-state area is under the jurisdiction of the Consulate.**

**In 2018, a total of 1,611 Japanese business facilities were counted in the survey. Retail locations are excluded. Data is as of October 1, 2018.**

**Source: Consulate-General of Japan in Chicago**

**Note: Japanese business facilities include those which are ultimately 10% or more owned by a Japanese company or national.**

TABLE 1  
 NUMBER OF JAPANESE BUSINESS FACILITIES BY STATE AND YEAR  
 2018

YEAR	IA	IL	IN	KS	MN	MO	ND	NE	SD	WI	10 STATES	
											Total	%
2008	56	673	244	35	80	76	5	43	7	59	1,278	
2013	61	616	257	52	83	86	15	55	9	60	1,294	
2014	68	636	268	56	85	108	19	61	8	69	1,378	6.5
2015	69	630	274	56	82	95	19	62	8	64	1,359	-1.4
2016	68	637	285	54	87	101	19	63	8	65	1,387	2.1
2017	62	634	300	57	92	102	19	67	9	72	1,414	1.9
2018	71	732	324	69	104	123	19	77	10	82	1,611	13.9
18/17%	14.5	15.5	8.0	21.1	13.0	20.6	0.0	14.9	11.1	13.9		13.9
18/13%	16.4	18.8	26.1	32.7	25.3	43.0	26.7	40.0	11.1	36.7		24.5
18/08%	26.8	8.8	32.8	97.1	30.0	61.8	280.0	79.1	42.9	39.0		26.1

%; Percent change over previous period.

Note: Total Japanese business facilities includes each location for a particular company in the 10-state region. Data from previous years was revised in December 2019.

BUSINESS FACILITY NUMBER

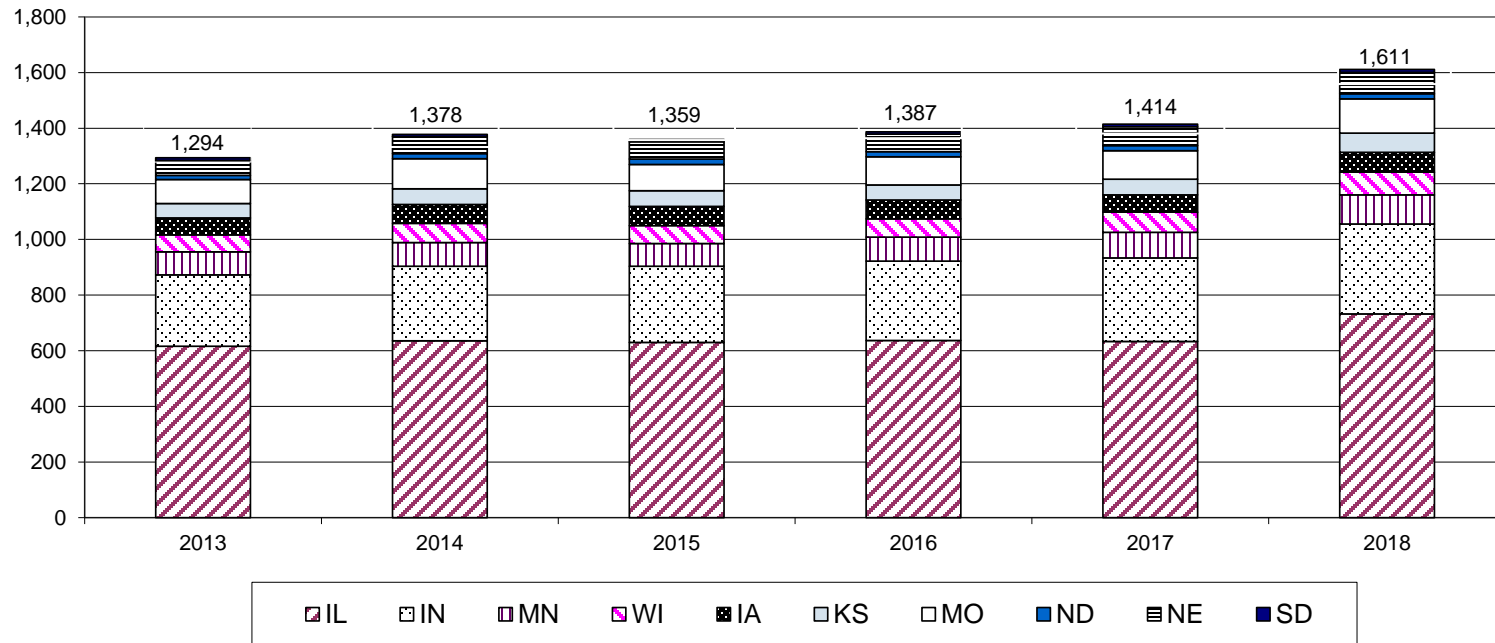


TABLE 2  
JAPANESE BUSINESS FACILITY EMPLOYMENT BY TYPE AND YEAR  
2018

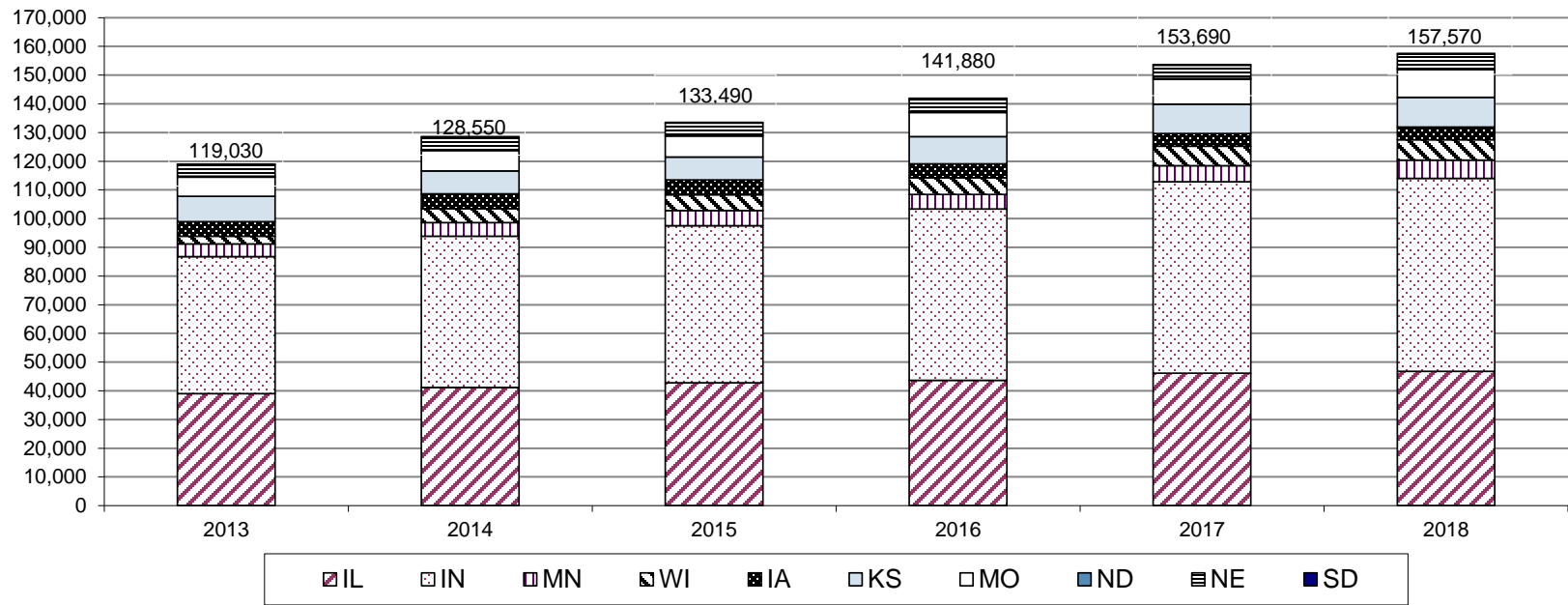
YEAR	IA	IL	IN	KS	MN	MO	ND	NE	SD	WI	10 STATES	
											Total	%
<b>TOTAL EMPLOYEES*</b>												
2013	5,020	38,990	47,760	8,880	4,440	6,670	310	4,110	170	2,680	119,030	
2014	5,250	41,130	52,750	7,980	4,770	7,030	360	4,300	200	4,780	128,550	8.0
2015	5,120	42,800	54,790	7,980	5,220	7,310	340	4,190	190	5,560	133,490	3.8
2016	4,900	43,610	59,790	9,440	5,060	8,410	320	4,400	180	5,780	141,880	6.3
2017	4,350	46,160	66,710	10,270	5,580	8,590	340	4,700	170	6,820	153,690	8.3
2018	4,400	46,800	67,230	10,400	6,340	9,680	350	5,050	190	7,140	157,570	2.5
18/17%	1.0	1.4	0.8	1.3	13.6	12.6	2.7	7.4	6.9	4.6	2.5	
18/13%	-12.5	20.0	40.8	17.1	42.7	45.2	13.0	23.0	9.5	166.3	32.4	
<b>LOCAL EMPLOYEES HIRED IN THE U.S.*</b>												
2013	4,980	37,720	47,070	8,860	4,380	6,620	310	4,050	170	2,650	116,790	
2014	5,200	39,780	52,000	7,960	4,640	6,960	360	4,240	190	4,740	126,090	8.0
2015	5,080	41,340	54,000	7,930	5,160	7,240	340	4,140	190	5,520	130,930	3.8
2016	4,850	42,130	58,940	9,390	5,000	8,340	320	4,350	180	5,730	139,250	6.4
2017	4,310	44,570	65,790	10,220	5,520	8,540	340	4,650	170	6,770	150,870	8.4
2018	4,340	45,220	66,340	10,360	6,260	9,620	350	4,990	180	7,090	154,730	2.6
18/17%	0.7	1.5	0.8	1.3	13.4	12.6	2.7	7.2	7.0	4.7	2.6	
18/13%	-12.9	19.9	40.9	16.9	43.1	45.4	13.0	23.0	9.6	167.8	32.5	
<b>JAPANESE EMPLOYEES ASSIGNED FROM JAPAN</b>												
2013	50	1,270	690	30	70	50	0	50	0	40	2,230	
2014	50	1,350	750	30	70	70	0	50	0	40	2,400	7.3
2015	50	1,470	800	50	60	70	0	50	0	40	2,580	7.5
2016	50	1,480	850	50	50	70	0	50	0	40	2,650	2.7
2017	50	1,590	920	50	60	60	0	50	0	50	2,820	6.6
2018	60	1,580	900	50	80	60	0	60	0	50	2,840	0.8
18/17%	24.5	-0.4	-2.3	-4.0	34.5	14.3	0.0	19.6	0.0	4.0	0.8	
18/13%	35.6	24.6	30.6	71.4	18.2	23.1	0.0	17.3	0.0	48.6	27.2	
<b>ACTUAL MANUFACTURING EMPLOYEES*</b>												
2013	2,540	13,380	34,060	440	1,220	3,230	120	2,580	50	1,150	58,780	
2014	2,880	14,690	37,100	430	1,260	3,050	110	2,620	50	1,950	64,150	9.1
2015	2,390	15,500	38,730	440	1,410	3,420	110	2,560	50	2,270	66,870	4.2
2016	2,300	14,580	41,840	420	1,400	3,400	110	2,640	50	2,370	69,100	3.3
2017	2,110	16,390	45,210	1,000	1,500	3,200	110	2,630	50	2,930	75,130	8.7
2018	2,240	16,650	45,050	1,160	1,630	3,580	110	3,000	50	2,890	76,340	1.6
18/17%	6.5	1.6	-0.3	15.5	8.6	11.8	-7.0	14.0	0.0	-1.4	1.6	
18/13%	-11.8	24.5	32.3	164.3	33.6	10.7	-10.2	15.9	-4.0	150.6	29.9	

\*: The above categories include part-time employment. Actual Manufacturing Employees indicates the number of employees who are involved directly in the manufacturing process in the 10-state Midwest area.

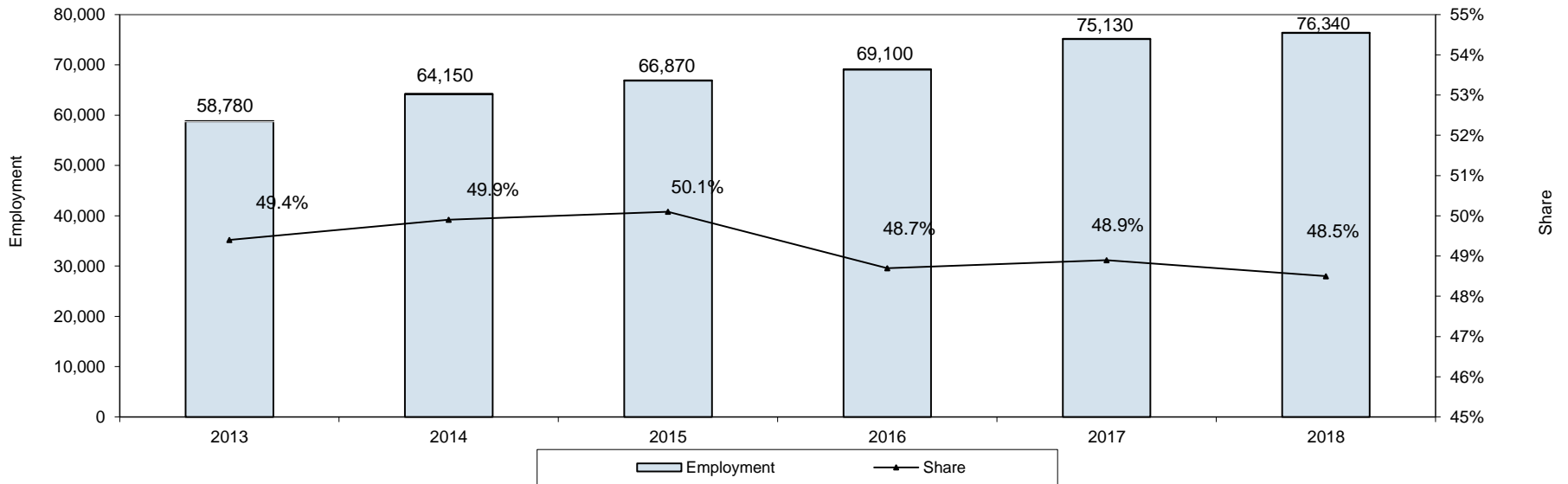
#: Change over previous year.

Note: Due to rounding, the sum of each column may not equal the column total. The percent comparison is based upon the actual numbers. Data from previous years was revised in December 2019.

### TOTAL EMPLOYMENT



### ACTUAL MANUFACTURING EMPLOYMENT



Note: Actual Manufacturing Employees indicates the number of employees who are involved directly in the manufacturing process in the 10-state Midwest area.

TABLE 3  
NUMBER OF JAPANESE BUSINESS FACILITIES BY SECTOR  
2018

INDUSTRY	IA	IL	IN	KS	MN	MO	ND	NE	SD	WI	Total	10 STATES		
												NC	18/17%	% of Total
Agriculture, Forestry and Fisheries	19	63	31	16	10	26	10	16	3	8	202	34	20.2	12.5
Commercial Trade	3	66	16	4	1	7	0	4	0	1	102	2	2.0	6.3
Construction	0	2	2	0	1	0	0	0	0	0	5	0	0.0	0.3
Electric, Heat and Gas	0	1	0	0	0	0	0	0	0	0	1	0	0.0	0.1
Finance and Insurance	2	22	0	3	5	5	0	0	0	2	39	4	11.4	2.4
Information and Communication	0	5	2	0	0	2	0	3	0	0	12	0	0.0	0.7
Manufacturing*	41	392	237	41	59	63	9	48	7	57	954	20	2.1	59.2
Motor Vehicles and Parts	6	52	112	0	2	10	0	4	0	8	194	-1	-0.5	12.0
Electronics	1	69	11	3	8	5	0	6	1	9	113	0	0.0	7.0
Machine Tools	1	45	5	0	2	1	0	1	0	3	58	-1	-1.7	3.6
Precision Instruments	1	22	8	10	8	5	0	2	0	5	61	0	0.0	3.8
Other Machinery	4	34	14	2	5	2	2	0	0	6	69	0	0.0	4.3
Tire and Rubber	3	6	3	0	0	0	0	0	0	0	12	0	0.0	0.7
Metal and Steel	0	15	20	0	2	2	0	0	0	3	42	1	2.4	2.6
Food	3	12	1	1	4	6	0	5	0	3	35	2	6.1	2.2
Chemical	18	59	34	22	15	22	7	26	6	13	222	12	5.7	13.8
Pharmaceutical	1	12	0	0	3	0	0	0	0	1	17	0	0.0	1.1
Other	3	66	29	3	10	10	0	4	0	6	131	7	5.6	8.1
Actual Manufacturing**	15	124	153	8	19	15	1	12	1	20	368	9	2.5	22.8
Medical Care and Welfare	0	1	0	0	0	0	0	0	0	1	2	0	0.0	0.1
Mining	0	2	0	1	0	0	0	0	0	2	5	0	0.0	0.3
Real Estate	0	1	0	0	0	0	0	0	0	0	1	0	0.0	0.1
Service	3	24	10	1	15	4	0	1	0	3	61	23	60.5	3.8
Academic Research and Expertise	0	9	5	0	2	1	0	0	0	0	17	-1	-5.6	1.1
Entertainment, Living, Beauty Salon	1	10	3	0	2	2	0	1	0	1	20	6	42.9	1.2
Hotel and Food	0	1	0	0	0	0	0	0	0	0	1	0	0.0	0.1
Other	2	4	2	1	11	1	0	0	0	2	23	18	360.0	1.4
Transportation and Warehouse	2	47	12	1	8	7	0	2	0	1	80	-1	-1.2	5.0
Other	1	106	14	2	5	9	0	3	0	7	147	115	359.4	9.1
Total	71	732	324	69	104	123	19	77	10	82	1,611	197	13.9	100.0

\*: Manufacturing indicates the number of business facilities whose parent company is engaged in manufacturing. This includes their non-manufacturing facilities such as distribution centers, sales offices, and administrative offices etc.

\*\* : Actual Manufacturing indicates the number of business facilities that are involved directly in the manufacturing process in the 10-state Midwest area.

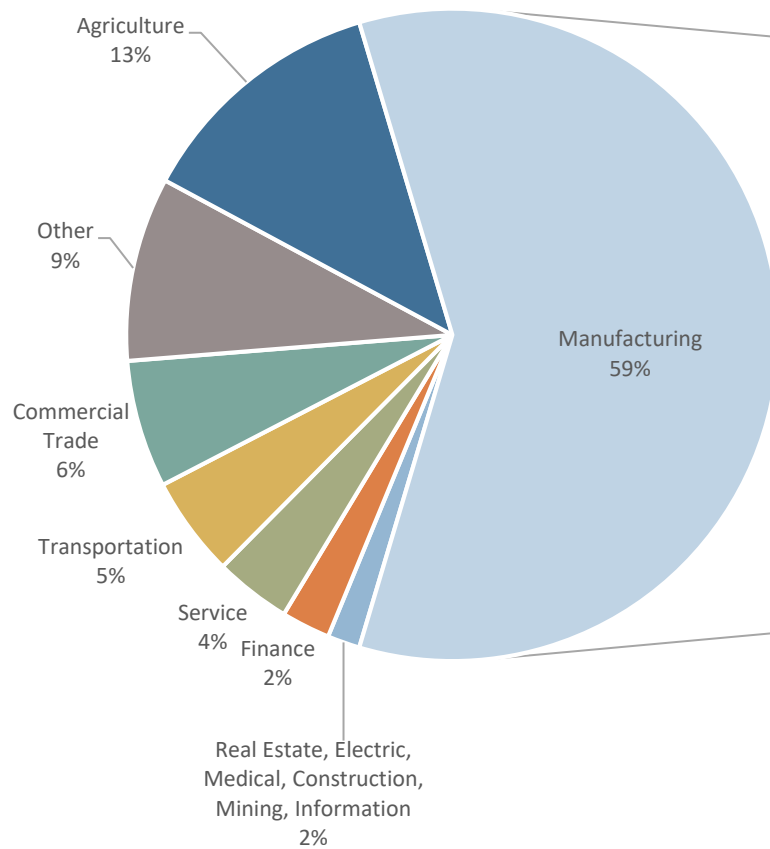
NC: Net Change.

18/17%: Percent change over previous year.

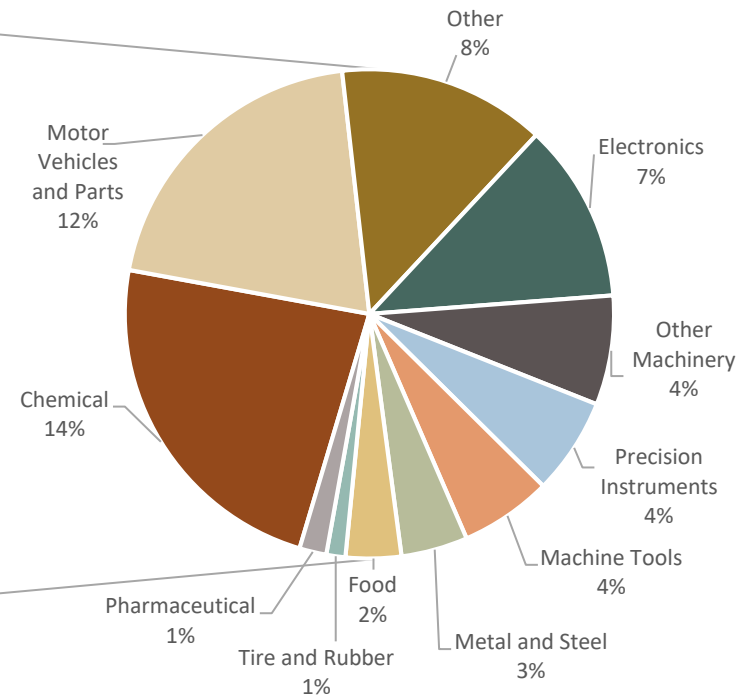
Note: Data from previous years was revised in December 2019.

NUMBER OF JAPANESE BUSINESS FACILITIES  
SHARE BY SECTOR  
(10 States)

All Industries



Manufacturing



Note: Due to rounding, the sum of the sectors may not equal 100%.

## NUMBER OF JAPANESE BUSINESS FACILITIES BY STATE AND SECTOR

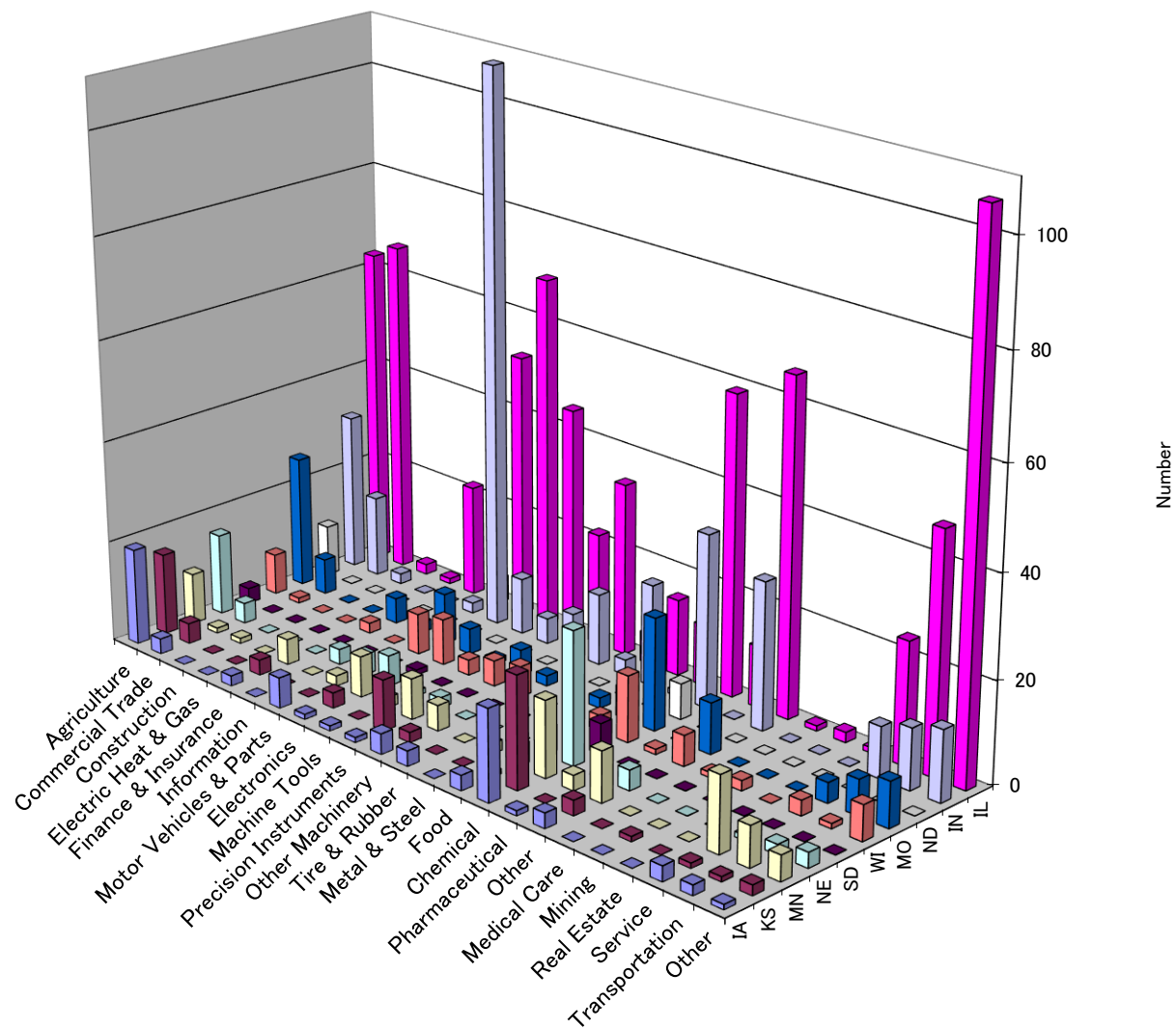


TABLE 4  
NUMBER OF JAPANESE BUSINESS FACILITIES BY SECTOR  
2013 - 2018

INDUSTRY	10 STATES						
	2013	2014	2015	2016	2017	2018	18/17%
Agriculture, Forestry and Fisheries	129	155	139	168	168	202	20.2
Commercial Trade	101	109	97	97	100	102	2.0
Construction	4	5	5	5	5	5	0.0
Electric, Heat and Gas	1	1	1	1	1	1	0.0
Finance and Insurance	37	37	37	39	35	39	11.4
Information and Communication	7	9	8	8	12	12	0.0
Manufacturing*	865	903	927	922	934	954	2.1
Motor Vehicles and Parts	181	179	184	188	195	194	-0.5
Electronics	114	112	109	114	113	113	0.0
Machine Tools	53	57	57	58	59	58	-1.7
Precision Instruments	75	63	64	63	61	61	0.0
Other Machinery	74	72	71	69	69	69	0.0
Tire and Rubber	17	19	17	14	12	12	0.0
Metal and Steel	30	34	36	37	41	42	2.4
Food	30	30	30	29	33	35	6.1
Chemical	175	205	226	215	210	222	5.7
Pharmaceutical	12	12	14	15	17	17	0.0
Other	104	120	119	120	124	131	5.6
Actual Manufacturing**	314	326	333	341	359	368	2.5
Medical Care and Welfare	2	2	2	2	2	2	0.0
Mining	1	1	1	1	5	5	0.0
Real Estate	1	1	1	1	1	1	0.0
Service	46	47	33	33	38	61	60.5
Academic Research and Expertise	25	25	12	13	18	17	-5.6
Entertainment, Living, Beauty Salon	14	14	14	14	14	20	42.9
Hotel and Food	1	1	1	1	1	1	0.0
Other	6	7	6	5	5	23	360.0
Transportation and Warehouse	79	79	78	78	81	80	-1.2
Other	21	29	30	32	32	147	359.4
Total	1,294	1,378	1,359	1,387	1,414	1,611	13.9

\*: Manufacturing indicates the number of business facilities whose parent company is engaged in manufacturing. This includes their non-manufacturing facilities such as distribution centers, sales offices, and administrative offices etc.

\*\* : Actual Manufacturing indicates the number of business facilities that are involved directly in the manufacturing process in the 10-state Midwest area.

18/17%: Percent change over previous year.

Note: Data from previous years was revised in December 2019.



TABLE 5  
TOTAL EMPLOYMENT BY SECTOR  
2018

INDUSTRY	IA	IL	IN	KS	MN	MO	ND	NE	SD	WI	Total	10 STATES		
												NC	18/17 %	% of Total
Agriculture, Forestry and Fisheries	260	680	360	140	80	190	70	560	20	70	2,430	-30	-1.2	1.5
Commercial Trade	20	2,600	280	60	20	330	0	30	0	0	3,350	30	0.8	2.1
Construction	0	40	10	0	0	0	0	0	0	0	50	0	3.8	0.0
Electric, Heat and Gas	0	30	0	0	0	0	0	0	0	0	30	0	0.0	0.0
Finance and Insurance	600	1,090	0	50	60	1,630	0	0	0	10	3,430	220	6.8	2.2
Information and Communication	0	280	10	0	0	0	0	0	0	0	290	0	0.0	0.2
Manufacturing*	3,500	39,310	65,440	3,310	5,780	7,330	280	4,450	170	6,840	136,410	3,200	2.4	86.6
Motor Vehicle/Parts	580	12,570	47,390	0	20	5,280	0	2,700	0	310	68,860	720	1.1	43.7
Electronics	0	4,720	1,790	120	1,190	0	0	270	100	1,460	9,640	720	8.0	6.1
Machine Tools	80	1,530	160	0	110	0	0	10	0	180	2,060	-250	-10.7	1.3
Prec. Instruments	0	2,730	780	100	1,030	510	0	110	0	370	5,640	50	0.9	3.6
Other Machinery	340	3,730	2,050	1,670	500	40	210	0	0	1,440	9,970	490	5.2	6.3
Tire and Rubber	1,490	740	1,070	0	0	0	0	0	0	0	3,300	-40	-1.3	2.1
Metal and Steel	0	730	2,840	0	210	80	0	0	0	2,210	6,070	330	5.7	3.8
Food	470	1,550	2,050	820	250	340	0	570	0	320	6,370	360	5.9	4.0
Chemical	310	2,560	1,540	340	330	340	70	340	70	330	6,210	100	1.7	3.9
Pharmaceutical	50	4,610	0	0	500	0	0	0	0	20	5,180	60	1.1	3.3
Other	190	3,850	5,770	270	1,640	730	0	460	0	200	13,110	660	5.3	8.3
Actual Manufacturing**	2,240	16,650	45,050	1,160	1,630	3,580	110	3,000	50	2,890	76,340	1,220	1.6	48.5
Medical Care and Welfare	0	0	0	0	0	0	0	0	0	30	30	0	0.0	0.0
Mining	0	0	0	20	0	0	0	0	0	0	20	0	0.0	0.0
Real Estate	0	0	0	0	0	0	0	0	0	0	0	0	0.0	0.0
Service	0	520	250	10	100	90	0	0	0	10	980	80	7.9	0.6
Academic Research and Expertise	0	370	250	0	50	70	0	0	0	0	740	0	-0.5	0.5
Entertainment, Living, Beauty Salon	0	120	0	0	10	10	0	0	0	0	140	0	-1.4	0.1
Hotel and Food	0	0	0	0	0	0	0	0	0	0	0	0	0.0	0.0
Other	0	30	0	10	50	10	0	0	0	10	100	80	354.5	0.1
Transportation and Warehouse	10	1,560	800	0	110	20	0	10	0	0	2,500	290	13.2	1.6
Other	0	700	70	6,820	180	100	0	0	0	190	8,060	100	1.3	5.1
Total	4,400	46,800	67,230	10,400	6,340	9,680	350	5,050	190	7,140	157,570	3,880	2.5	100.0

\*: Manufacturing indicates the number of business facilities whose parent company is engaged in manufacturing. This includes their non-manufacturing facilities such as distribution centers, sales offices, and administrative offices etc.

\*\* : Actual Manufacturing indicates the number of employees who are involved directly in the manufacturing process in the 10-state Midwest area.

NC: Net Change.

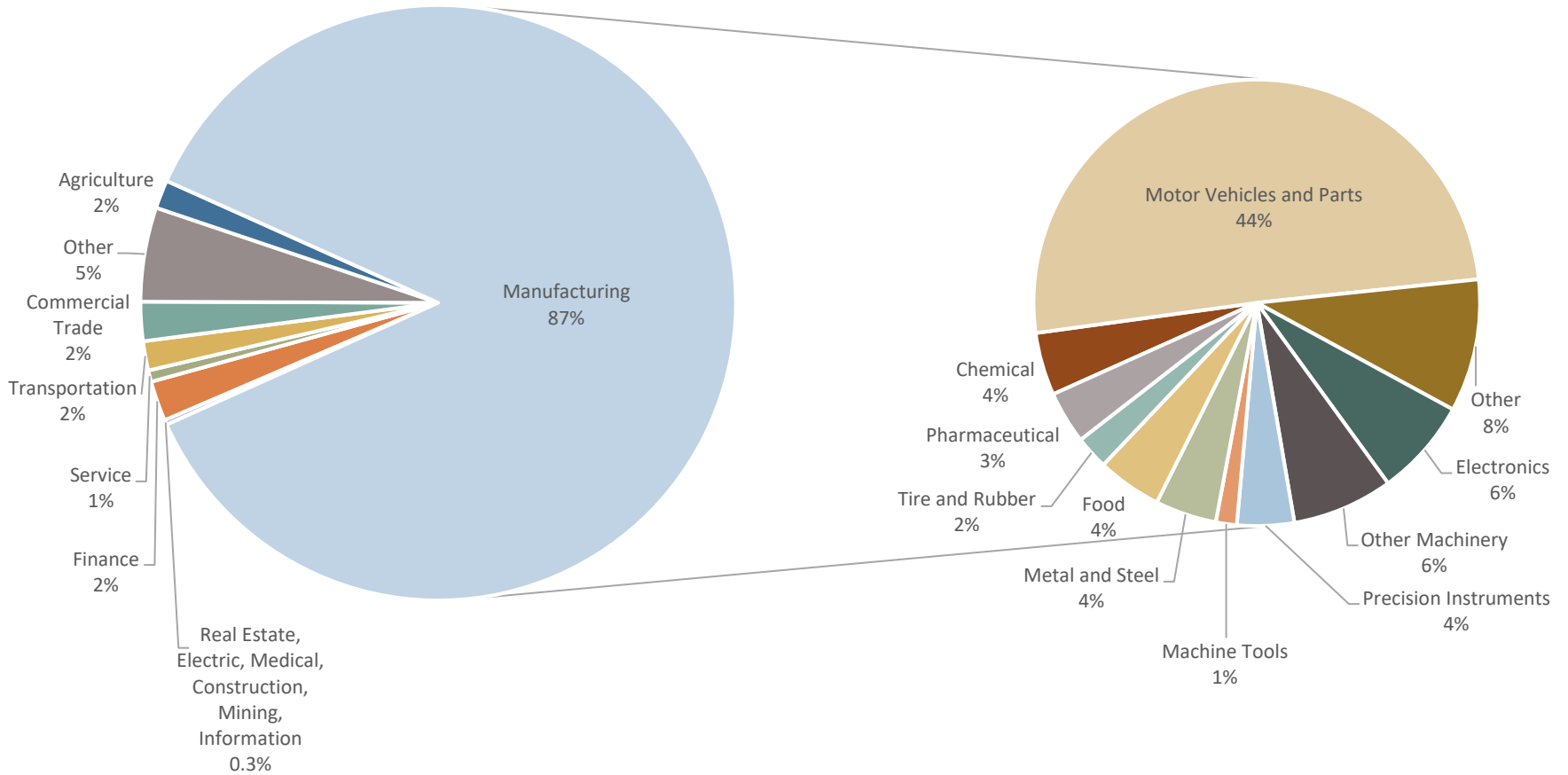
18/17%: Percent change over previous year.

Note: Due to rounding, the sum of each column may not equal the column total. Data from previous years was revised in December 2019.

TOTAL EMPLOYMENT  
SHARE BY SECTOR  
(10 States)

All Industries

Manufacturing



Note: Due to rounding, the sum of the sectors may not equal 100%.



TABLE 6  
TOTAL EMPLOYMENT BY SECTOR  
2013 - 2018

INDUSTRY	10 STATES						
	2013	2014	2015	2016	2017	2018	18/17%
Agriculture, Forestry and Fisheries	2,030	2,670	2,630	2,640	2,460	2,430	-1.2
Commercial Trade	1,940	2,450	3,040	3,060	3,320	3,350	0.8
Construction	20	40	60	60	50	50	3.8
Electric, Heat and Gas	30	30	30	30	30	30	0.0
Finance and Insurance	1,660	1,690	2,080	3,200	3,200	3,430	6.8
Information and Communication	310	310	290	290	290	290	0.0
Manufacturing*	102,810	111,580	114,370	121,870	133,210	136,400	2.4
Motor Vehicles and Parts	54,330	57,940	58,490	62,000	68,130	68,860	1.1
Electronics	7,800	7,480	8,290	8,740	8,930	9,630	8.0
Machine Tools	1,570	1,720	2,120	2,210	2,310	2,060	-10.7
Precision Instruments	5,710	5,560	5,720	5,720	5,580	5,640	0.9
Other Machinery	7,500	7,050	6,660	8,270	9,480	9,970	5.2
Tire and Rubber	3,960	4,260	4,020	4,500	3,340	3,300	-1.3
Metal and Steel	2,090	5,220	5,280	5,580	5,750	6,070	5.7
Food	4,400	4,840	4,820	4,600	6,010	6,370	5.9
Chemical	5,020	5,130	5,570	5,440	6,110	6,210	1.7
Pharmaceutical	4,210	4,330	4,590	4,620	5,120	5,180	1.1
Other	6,220	8,070	8,820	10,190	12,450	13,110	5.3
Actual Manufacturing**	58,780	64,150	66,870	69,100	75,130	76,340	1.6
Medical Care and Welfare	30	30	30	30	30	30	0.0
Mining	20	20	20	20	20	20	0.0
Real Estate	0	0	0	0	0	0	0.0
Service	600	590	530	590	910	980	7.9
Academic Research and Expertise	440	440	380	440	750	740	-0.5
Entertainment, Living, Beauty Salon	130	120	120	120	140	140	-1.4
Hotel and Food	0	0	0	0	0	0	0.0
Other	30	30	30	20	20	100	354.5
Transportation and Warehouse	1,250	1,480	2,590	2,350	2,210	2,500	13.2
Other	8,330	7,650	7,830	7,740	7,960	8,060	1.3
Total	119,030	128,550	133,490	141,880	153,690	157,570	2.5

\*: Manufacturing indicates the number of business facilities whose parent company is engaged in manufacturing. This includes their non-manufacturing facilities such as distribution centers, sales offices, and administrative offices etc.

\*\* : Actual Manufacturing indicates the number of employees who are involved directly in the manufacturing process in the 10-state Midwest area.

18/17%: Percent change over previous year.

Note: Due to rounding, the sum of each column may not equal the column total. Data from previous years was revised in December 2019.

TABLE 7  
NUMBER OF JAPANESE BUSINESS FACILITIES BY EMPLOYMENT SIZE  
2018

EMPLOYEE NUMBER	IA	IL	IN	KS	MN	MO	ND	NE	SD	WI	Total	10 STATES	
												18/17	
												NC	%
1 – 10	40	284	112	42	57	69	13	42	5	39	703	73	11.6
11 – 100	18	256	92	20	26	30	5	21	5	23	496	6	1.2
101 – 500	10	80	71	3	17	12	1	10	0	10	214	0	0.0
501 – 1000	1	16	26	1	1	4	0	0	0	4	53	4	8.2
1001 and Above	1	5	12	2	0	2	0	1	0	1	24	0	0.0
Unknown*	1	91	11	1	3	6	0	3	0	5	121	NA	NA
<b>Total</b>	<b>71</b>	<b>732</b>	<b>324</b>	<b>69</b>	<b>104</b>	<b>123</b>	<b>19</b>	<b>77</b>	<b>10</b>	<b>82</b>	<b>1,611</b>	<b>197</b>	<b>13.9</b>

\*: The employment number is counted as zero.

NC: Net Change

%; Percent change over previous year.

Note: Data from previous years was revised in December 2019.

TABLE 8  
NUMBER OF JAPANESE BUSINESS FACILITIES BY OWNERSHIP SHARE  
2018

OWNERSHIP	IA	IL	IN	KS	MN	MO	ND	NE	SD	WI	Total	10 STATES	
												18/17	
												NC	%
100%	64	610	271	66	94	111	18	70	10	73	1,387	87	6.7
50 – 99%	4	25	32	2	5	5	1	2	0	2	78	-4	-4.9
10 – 49%	2	6	10	0	2	1	0	2	0	2	25	0	0.0
Unknown	1	91	11	1	3	6	0	3	0	5	121	NA	NA
<b>Total</b>	<b>71</b>	<b>732</b>	<b>324</b>	<b>69</b>	<b>104</b>	<b>123</b>	<b>19</b>	<b>77</b>	<b>10</b>	<b>82</b>	<b>1,611</b>	<b>197</b>	<b>13.9</b>

NC: Net Change.

%; Percent change over previous year.

NA: Not Available

Note: Business facilities with less than 10 percent Japanese ownership are excluded from the survey. Data from previous years was revised in December 2019.