

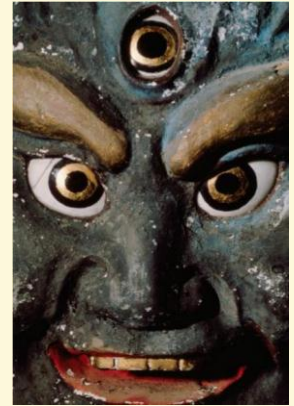
TOHOKU Through the Eyes of Japanese Photographers



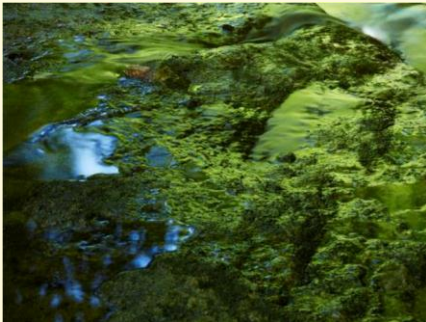
Ohamaza-cho, La Ville de la chance
Hiroshi Oshima 1979



Longevity Dance, Motsuji Temple,
Hiraizumi, Iwate
Hideo Haga 1979



Statue of Osawabutsu,
Ourani Sanpou Koujin,
Dewa Sanzan
Masatoshi Naito 1981-82



Reflection of Green Beech Woods
Meiki Lin 2011



Kesengawa, 2003/08/23
Naoya Hatakeyama 2003

**December 16, 2013
– February 7, 2014**

9:15am – 5:00pm
Monday through Friday

We will be open on Sat. January 11 from 11:00am to 5:00pm!

This exhibition of photographs of Tohoku uses photography to show the natural and cultural environment of Tohoku along with its people and their way of life. It is composed of the work of nine individual photographers and one photographers' group who belong to a variety of generations and stylistic tendencies.

Special Lecture by the Exhibit Curator, Mr. Kotaro Iizawa

Friday, January 10, 2014 5:30pm – 6:30pm

Olympia Centre 737 N. Michigan Ave. Chicago, IL 60611

20th Floor Conference Room

Please RSVP by January 8 to jic@cg.mofa.go.jp with your name and phone number.