

JAPANESE DIRECT INVESTMENT: 2012 SURVEY

The Consulate General of Japan at Chicago conducts an annual survey to determine the Japanese business presence in Illinois, Indiana, Iowa, Kansas, Minnesota, Missouri, Nebraska, North Dakota, South Dakota, and Wisconsin. The ten-state area is under the jurisdiction of the Consulate.

In 2012, a total of 1,137 Japanese business facilities were counted in the survey. Retail locations are excluded. Data is as of October 1, 2012.

Source: Consulate General of Japan at Chicago

Note: Japanese business facilities include those which are ultimately 10% or more owned by a Japanese company or national.

TABLE 1
 NUMBER OF JAPANESE BUSINESS FACILITIES BY STATE AND NUMBER
 2012

YEAR	IA	IL	IN	KS	MN	MO	ND	NE	SD	WI	10 STATES	
											Total	%
2002		746	244		63					43		
2007	48	657	237	31	70	80	4	40	7	55	1,229	
2008	51	652	229	35	75	81	5	43	7	56	1,234	0.4
2009	47	621	217	35	72	80	6	41	9	54	1,182	-4.2
2010	47	604	212	35	71	76	6	43	9	53	1,156	-2.2
2011	50	606	213	40	76	83	6	44	10	57	1,185	2.5
2012	45	590	203	40	71	81	5	40	9	53	1,137	-4.1
12/11%	-10.0	-2.6	-4.7	0.0	-6.6	-2.4	-16.7	-9.1	-10.0	-7.0	-4.1	
12/07%	-6.3	-10.2	-14.3	29.0	1.4	1.3	25.0	0.0	28.6	-3.6	-7.5	
12/02%		-20.9	-16.8		12.7					23.3		

%; Percent change over previous period.

Note: Total Japanese business facilities includes each location for a particular company in the 10-state region. Previous year's data was revised on July 5, 2013.

BUSINESS FACILITY NUMBER

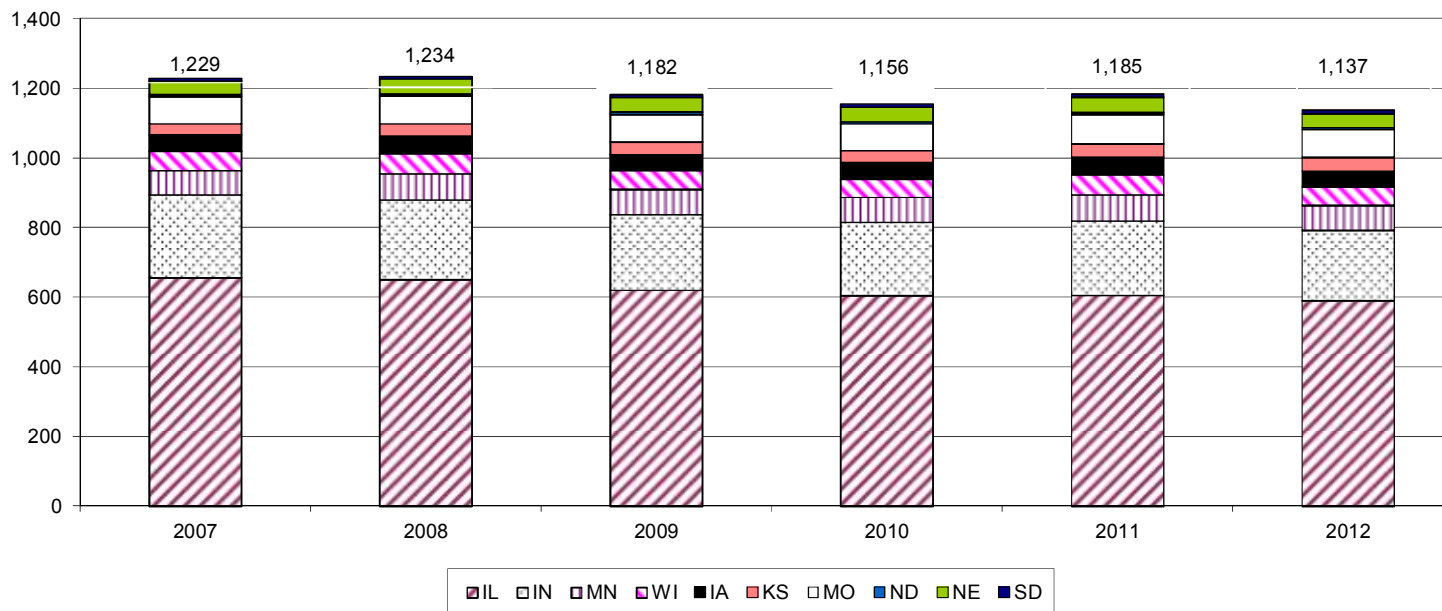


TABLE 2
JAPANESE BUSINESS FACILITY EMPLOYMENT BY TYPE AND YEAR
2012

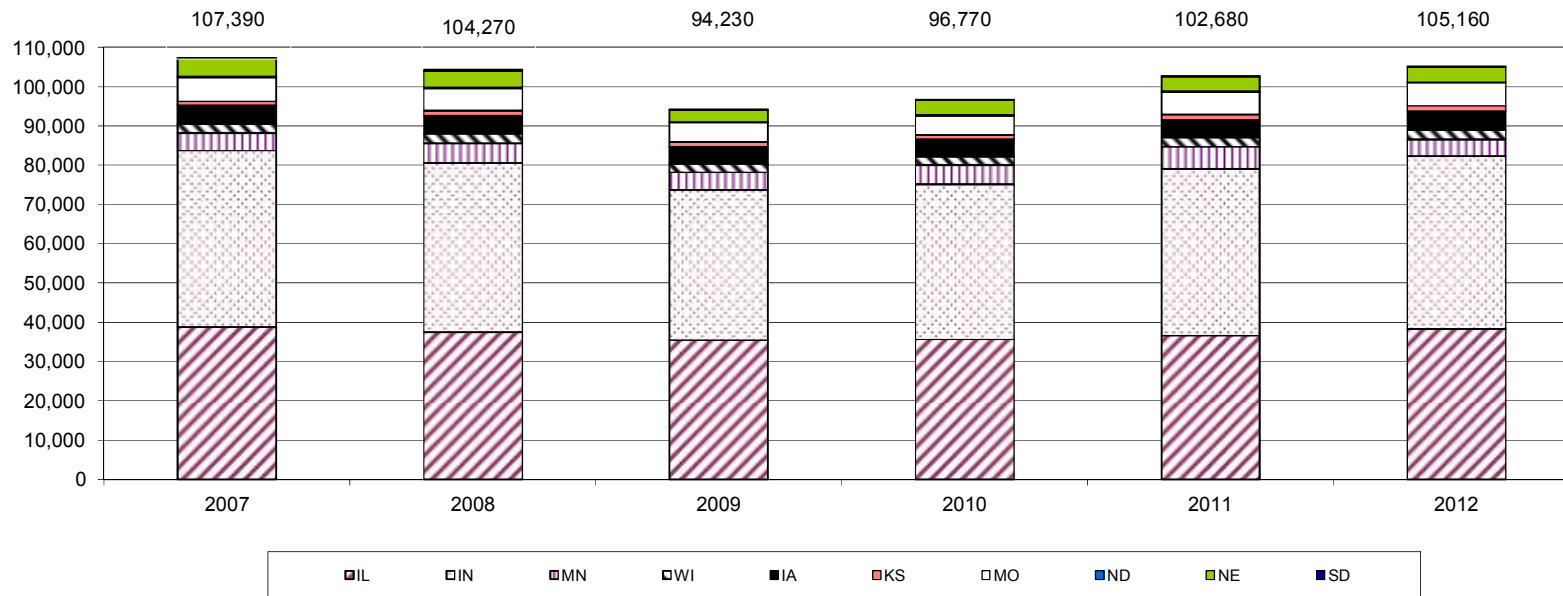
YEAR	IA	IL	IN	KS	MN	MO	ND	NE	SD	WI	10 STATES	
											Total	%
TOTAL EMPLOYEES*												
2007	4,770	38,890	44,850	1,080	4,380	6,010	270	4,580	240	2,330	107,390	
2008	4,590	37,500	43,020	1,190	5,060	5,740	250	4,250	240	2,450	104,270	-2.9
2009	4,300	35,540	38,200	1,150	4,480	4,900	220	3,030	220	2,210	94,230	-9.6
2010	4,370	35,710	39,470	1,190	4,810	4,830	250	3,750	220	2,180	96,770	2.7
2011	4,500	36,570	42,610	1,380	5,410	5,660	260	3,670	200	2,440	102,680	6.1
2012	4,710	38,340	43,950	1,420	4,220	5,830	230	3,760	200	2,510	105,160	2.4
12/11%	4.7	4.8	3.2	2.5	-22.1	3.0	-11.0	2.6	1.0	3.1	2.4	
12/07%	-1.3	-1.4	-2.0	31.6	-3.9	-3.1	-14.3	-17.8	-16.3	7.9	-2.1	
LOCAL EMPLOYEES HIRED IN THE U.S.*												
2007	4,700	37,500	44,090	1,050	4,350	5,940	270	4,540	230	2,270	104,940	
2008	4,530	36,100	42,270	1,160	5,000	5,680	250	4,210	230	2,390	101,810	-3.0
2009	4,270	34,210	37,500	1,110	4,420	4,840	220	3,000	210	2,170	91,940	-9.7
2010	4,340	34,480	38,810	1,160	4,750	4,780	250	3,710	220	2,140	94,630	2.9
2011	4,460	35,370	41,920	1,350	5,350	5,600	260	3,630	190	2,400	100,530	6.2
2012	4,670	37,100	43,290	1,390	4,150	5,780	230	3,730	200	2,480	103,000	2.4
12/11%	4.5	4.9	3.3	2.6	-22.4	3.2	-11.0	2.7	1.0	3.1	2.4	
12/07%	-0.8	-1.1	-1.8	32.7	-4.6	-2.8	-14.3	-18.0	-16.2	9.1	-1.9	
JAPANESE EMPLOYEES ASSIGNED FROM JAPAN												
2007	70	1,390	760	30	40	70	0	30	10	60	2,450	
2008	60	1,400	750	30	60	60	0	40	10	60	2,460	0.6
2009	30	1,320	700	30	60	60	0	30	10	40	2,280	-7.2
2010	30	1,230	660	30	60	50	0	40	10	40	2,140	-6.1
2011	30	1,200	690	30	60	60	0	40	0	40	2,150	0.0
2012	40	1,240	660	30	70	50	0	40	0	40	2,170	1.0
12/11%	35.5	3.4	-3.6	-3.4	6.3	-15.3	0.0	0.0	0.0	0.0	1.0	
12/07%	-37.3	-10.8	-12.2	-6.7	88.9	-30.6	0.0	6.1	-20.0	-37.5	-11.4	
ACTUAL MANUFACTURING EMPLOYEES*												
2007	2,370	12,700	32,000	570	2,580	3,680	180	3,550	60	1,170	58,850	
2008	2,390	12,220	30,930	560	2,410	3,500	160	2,940	90	1,140	56,340	-4.3
2009	2,160	11,250	27,450	520	1,990	2,780	120	2,030	90	930	49,310	-12.5
2010	2,260	11,410	27,250	440	2,170	2,850	130	2,320	90	950	49,860	1.1
2011	2,370	11,830	29,420	550	2,290	3,060	130	2,510	70	930	53,160	6.6
2012	2,450	13,350	30,800	510	1,360	3,190	130	2,660	60	1,090	55,600	4.6
12/11%	3.5	12.9	4.7	-7.5	-40.7	4.4	1.5	5.8	-10.3	16.5	4.6	
12/07%	3.2	5.2	-3.8	-11.3	-47.4	-13.3	-23.4	-25.1	10.9	-7.2	-5.5	

*: The above categories include part-time employment. Actual Manufacturing indicates the number of business facilities that are involved directly in the manufacturing process.

%: Change over previous year unless otherwise specified.

Note: Due to rounding, the sum of each column may not equal the column total. The percent comparison is based upon the actual numbers. Previous years' data was revised on July 5, 2013.

TOTAL EMPLOYMENT



ACTUAL MANUFACTURING EMPLOYMENT

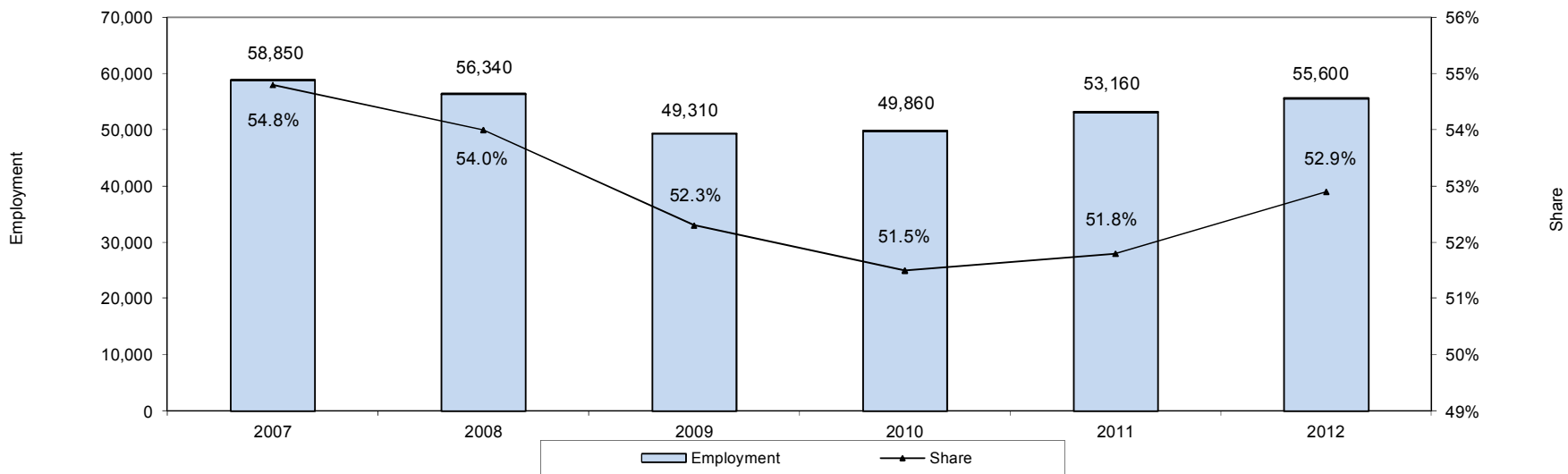


TABLE 3
NUMBER OF JAPANESE BUSINESS FACILITIES BY SECTOR
2012

INDUSTRY	IA	IL	IN	KS	MN	MO	ND	NE	SD	WI	Total	10 STATES		
												NC	12/11%	% of Total
Agriculture, Forestry and Fisheries	4	43	8	0	0	7	0	1	0	0	63	20	46.5	5.5
Mining	0	0	0	1	0	0	0	0	0	0	1	0	0.0	0.1
Construction	0	2	1	0	0	0	0	0	0	0	3	-1	-25.0	0.3
Manufacturing	36	365	163	32	52	56	5	33	9	41	792	-41	-4.9	69.7
Motor Vehicles and Parts	6	50	84	0	2	9	0	4	0	6	161	-9	-5.3	14.2
Electronics	0	72	11	3	9	3	0	3	1	3	105	-16	-13.2	9.2
Machine Tools	1	43	2	0	0	1	0	1	0	2	50	2	4.2	4.4
Precision Instruments	3	23	5	8	9	7	0	3	1	6	65	-1	-1.5	5.7
Other Machinery	4	48	14	1	6	2	2	0	0	5	82	1	1.2	7.2
Tire and Rubber	5	7	3	0	0	5	0	0	0	0	20	-1	-4.8	1.8
Metal and Steel	0	12	9	0	2	1	0	0	0	0	24	-6	-20.0	2.1
Food	3	11	1	0	3	3	0	2	0	3	26	-1	-3.7	2.3
Chemical	12	45	19	17	12	19	3	15	6	10	158	-8	-4.8	13.9
Pharmaceutical	1	9	0	0	0	0	0	0	1	1	12	1	9.1	1.1
Other	1	45	15	3	9	6	0	5	0	5	89	-3	-3.3	7.8
Actual Manufacturing*	14	114	114	7	18	15	1	10	2	13	308	-25	-7.5	27.1
Transportation and Warehouse	1	46	9	2	5	7	0	1	0	3	74	-5	-6.3	6.5
Service	0	33	7	0	8	4	0	0	0	7	59	-7	-10.6	5.2
Commercial Trade	2	70	13	4	1	7	0	5	0	1	103	-11	-9.6	9.1
Finance, Insurance and Real Estate	2	19	0	1	3	0	0	0	0	0	25	-1	-3.8	2.2
Other	0	12	2	0	2	0	0	0	0	1	17	-2	-10.5	1.5
Total	45	590	203	40	71	81	5	40	9	53	1,137	-48	-4.1	

*: Actual Manufacturing indicates the number of business facilities that are involved directly in the manufacturing process.

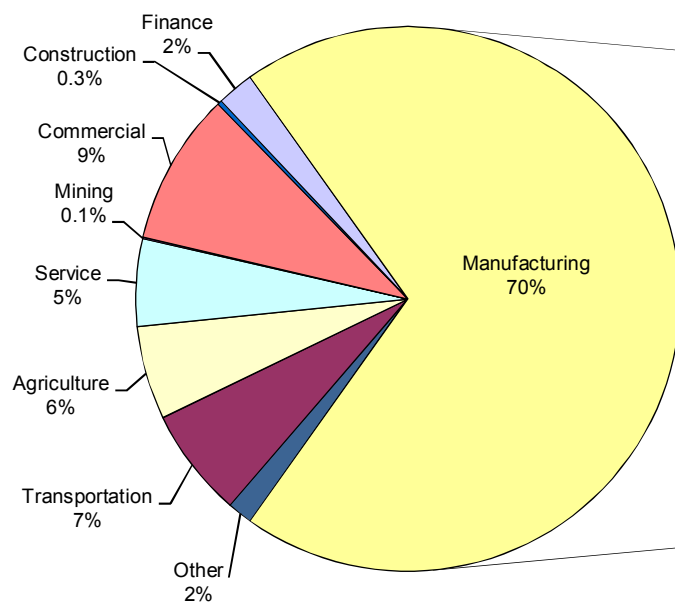
NC: Net Change.

%: Percent change over previous period.

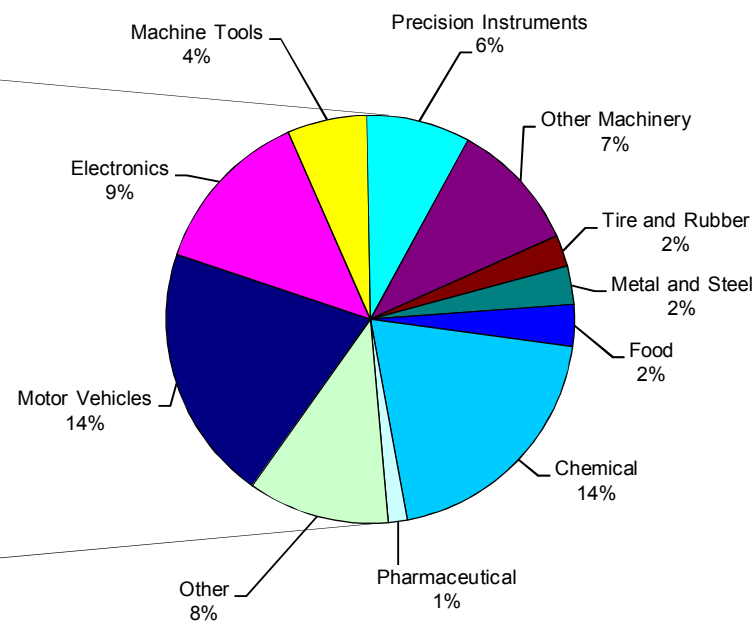
Note: Previous years' data was revised on July 5, 2013.

NUMBER OF JAPANESE BUSINESS FACILITIES
SHARE BY SECTOR
(10 States)

All Industries



Manufacturing



Note: Due to rounding, the sum of the sectors may not equal 100%.

NUMBER OF JAPANESE BUSINESS FACILITIES BY STATE AND SECTOR

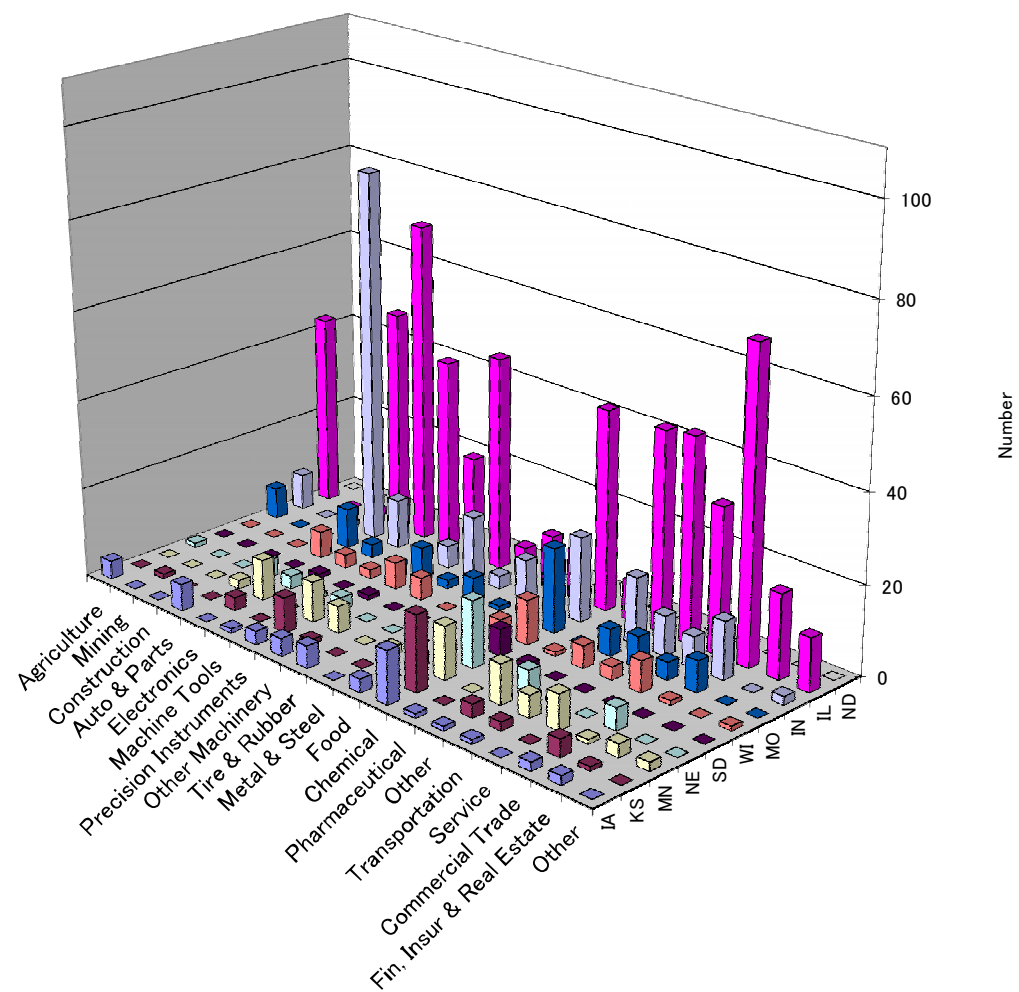


TABLE 4
NUMBER OF JAPANESE BUSINESS FACILITIES BY SECTOR
2007 - 2012

INDUSTRY	10 STATES						
	2007	2008	2009	2010	2011	2012	12/11
Agriculture, Forestry and Fisheries	59	57	45	42	43	63	46.5
Mining	1	1	1	1	1	1	0.0
Construction	6	5	5	5	4	3	-25.0
Manufacturing	841	850	821	803	833	792	-4.9
Motor Vehicles and Parts	185	183	177	172	170	161	-5.3
Electronics	129	139	128	122	121	105	-13.2
Machine Tools	51	50	48	48	48	50	4.2
Precision Instruments	36	35	34	33	66	65	-1.5
Other Machinery	93	91	85	84	81	82	1.2
Tire and Rubber	24	22	21	21	21	20	-4.8
Metal and Steel	32	32	31	30	30	24	-20.0
Food	27	27	27	27	27	26	-3.7
Chemical	164	173	173	169	166	158	-4.8
Pharmaceutical	7	6	7	7	11	12	9.1
Other	93	92	90	90	92	89	-3.3
Actual Manufacturing*	340	349	336	328	333	308	-7.5
Transportation and Warehouse	83	83	79	78	79	74	-6.3
Service	66	66	66	65	66	59	-10.6
Commercial Trade	119	120	118	117	114	103	-9.6
Finance, Insurance and Real Estate	30	30	26	25	26	25	-3.8
Other	24	22	21	20	19	17	-10.5
Total	1,229	1,234	1,182	1,156	1,185	1,137	-4.1

*: Actual Manufacturing indicates the number of business facilities that are involved directly in the manufacturing process.

NC: Net Change.

%: Percent change over previous period.

Note: Previous years' data was revised on July 5, 2013.

TABLE 5
TOTAL EMPLOYMENT BY SECTOR
2012

INDUSTRY	IA	IL	IN	KS	MN	MO	ND	NE	SD	WI	Total	10 STATES		
												NC	12/11 %	% of Total
Agriculture, Forestry and Fisheries	70	470	230	0	0	80	0	10	0	0	860	180	26.0	0.8
Mining	0	0	0	20	0	0	0	0	0	0	20	10	33.3	0.0
Construction	0	10	10	0	0	0	0	0	0	0	20	-10	-28.1	0.0
Manufacturing	4,030	33,680	43,140	1,280	3,990	5,510	230	3,720	200	2,330	98,110	2,970	3.1	93.3
Motor Vehicle/Parts	630	10,230	33,110	0	20	3,590	0	2,260	0	300	50,140	2,180	4.5	47.7
Electronics	0	4,250	1,660	120	670	110	0	190	100	130	7,220	-560	-7.2	6.9
Machine Tools	80	1,150	20	0	0	0	0	10	0	150	1,410	-100	-6.8	1.3
Prec. Instruments	140	1,900	760	320	1,080	510	0	110	0	350	5,190	230	4.7	4.9
Other Machinery	330	4,480	1,540	130	590	30	210	0	0	240	7,560	1,030	15.7	7.2
Tire and Rubber	2,260	1,760	1,380	0	0	80	0	0	0	0	5,480	190	3.6	5.2
Metal and Steel	0	410	870	0	300	60	0	0	0	0	1,640	10	0.6	1.6
Food	290	470	2,050	0	200	160	0	490	0	310	3,970	590	17.5	3.8
Chemical	250	2,070	430	360	300	500	20	200	70	340	4,520	110	2.4	4.3
Pharmaceutical	50	5,380	0	0	0	0	0	0	30	20	5,470	-110	-1.9	5.2
Other	10	1,590	1,310	360	820	460	0	470	0	480	5,500	-600	-9.8	5.2
Actual Manufacturing*	2,450	13,360	30,800	510	1,360	3,190	130	2,660	60	1,090	55,600	2,440	4.6	52.9
Transportation and Warehouse	10	1,040	50	10	40	30	0	0	0	10	1,180	-120	-9.0	1.1
Service	0	700	80	0	110	70	0	0	0	150	1,100	-30	-2.4	1.1
Commercial Trade	0	1,480	420	90	20	140	0	30	0	0	2,180	-520	-19.2	2.1
Finance, Insurance and Real Estate	600	480	0	20	60	0	0	0	0	0	1,160	30	2.6	1.1
Other	0	470	30	0	0	0	0	0	0	30	530	-20	-4.0	0.5
Total	4,710	38,340	43,950	1,420	4,220	5,830	230	3,760	200	2,510	105,160	2,480	2.4	

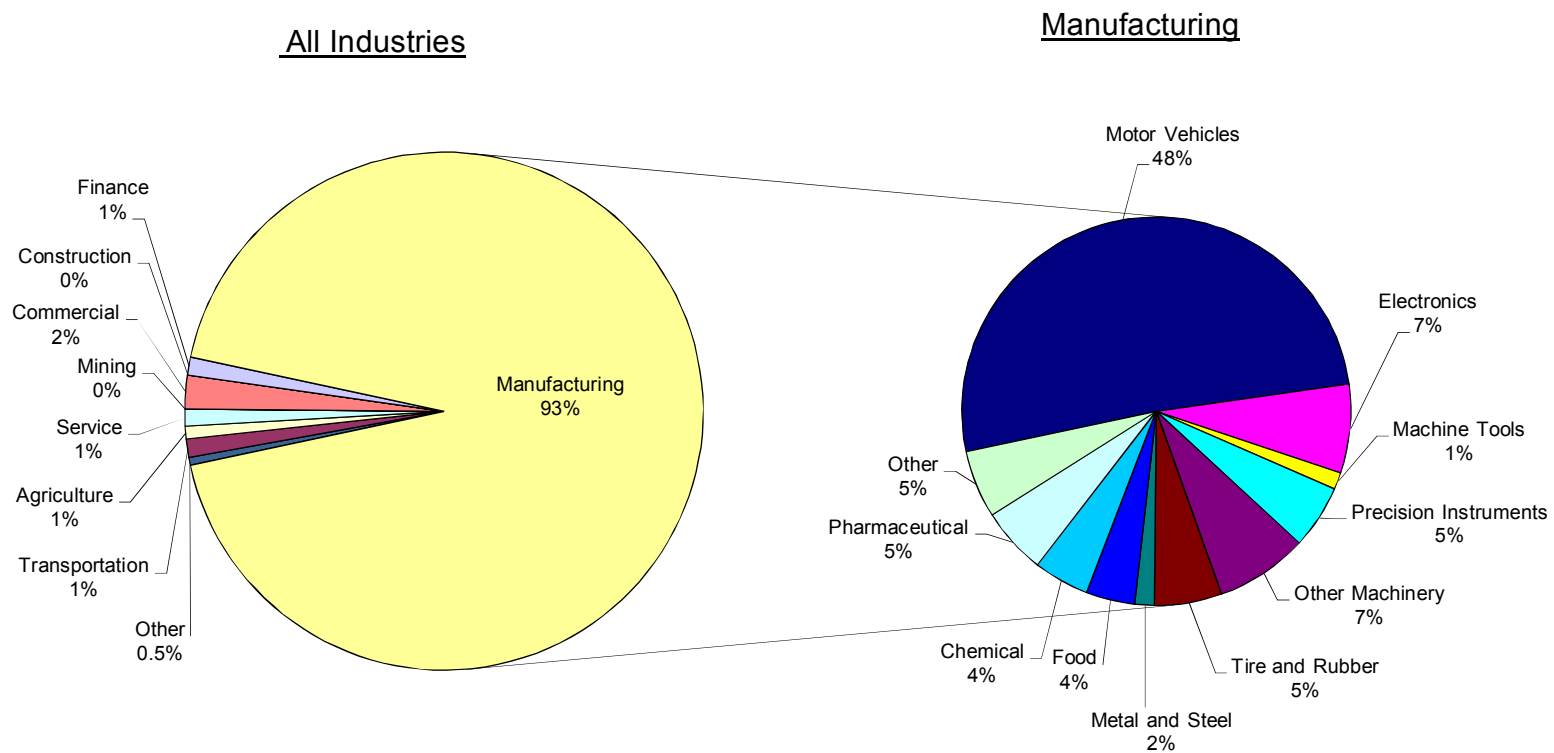
*: Actual Manufacturing Employment indicates the number of employees who are involved directly in the manufacturing process.

NC: Net Change.

?: Percent change over previous period.

Note: Due to rounding, the sum of each column may not equal the column total. Previous years' data was revised on July 5, 2013.

TOTAL EMPLOYMENT
SHARE BY SECTOR
(10 States)



Note: Due to rounding, the sum of the sectors may not equal 100%.

TABLE 6
TOTAL EMPLOYMENT BY SECTOR
2007 - 2012

INDUSTRY	10 STATES						
	2007	2008	2009	2010	2011	2012	12/11
Agriculture, Forestry and Fisheries	640	700	730	660	690	860	26.0
Mining	20	20	20	20	20	20	33.3
Construction	90	60	40	40	30	20	-28.1
Manufacturing	99,610	96,400	86,440	88,880	95,140	98,110	3.1
Motor Vehicles and Parts	52,840	49,830	42,540	44,540	47,960	50,140	4.5
Electronics	7,550	7,900	7,550	7,740	7,780	7,220	-7.2
Machine Tools	1,350	1,460	1,280	1,450	1,510	1,410	-6.8
Precision Instruments	1,660	1,740	1,550	1,890	4,960	5,190	4.7
Other Machinery	7,070	7,040	6,290	6,520	6,530	7,560	15.7
Tire and Rubber	5,360	5,160	5,310	5,380	5,290	5,480	3.6
Metal and Steel	1,900	2,120	1,930	1,560	1,630	1,640	0.6
Food	3,200	3,220	3,320	3,300	3,380	3,970	17.5
Chemical	4,670	4,730	4,630	4,400	4,410	4,520	2.4
Pharmaceutical	6,590	6,000	6,050	6,090	5,580	5,470	-1.9
Other	7,440	7,220	6,000	6,010	6,100	5,500	-9.8
Actual Manufacturing*	58,850	56,370	49,330	49,860	53,160	55,600	4.6
Transportation and Warehouse	1,470	1,480	1,320	1,340	1,300	1,180	-9.0
Service	1,070	1,090	1,150	1,090	1,130	1,100	-2.4
Commercial Trade	2,730	2,750	2,530	2,690	2,700	2,180	-19.2
Finance, Insurance and Real Estate	1,210	1,230	1,420	1,470	1,130	1,160	2.6
Other	560	550	580	580	550	530	-4.0
Total	107,390	104,270	94,230	96,770	102,680	105,160	2.4

*: Actual Manufacturing Employment indicates the number of employees who are involved directly in the manufacturing process.

NC: Net Change.

%: Percent change over previous period.

Note: Due to rounding, the sum of each column may not equal the column total. Previous years' data was revised on July 5, 2013.

TABLE 7
NUMBER OF JAPANESE BUSINESS FACILITIES BY EMPLOYMENT SIZE
2012

EMPLOYEE NUMBER	IA	IL	IN	KS	MN	MO	ND	NE	SD	WI	10 STATES		
											Total	12/11	
												Actual	%
1 – 10	19	246	55	20	32	40	3	16	4	23	458	-59	-11.4
11 – 100	15	266	75	17	26	29	1	16	5	22	472	7	1.5
101 – 500	9	59	52	3	12	8	1	7	0	8	159	4	2.6
501 – 1000	1	14	14	0	1	3	0	0	0	0	33	0	0.0
1001 and Above	1	5	7	0	0	1	0	1	0	0	15	0	0.0
Total	45	590	203	40	71	81	5	40	9	53	1,137	-48	-4.1

NC: Net Change.

?: Percent change over previous period.

Note: Previous years' data was revised on July 5, 2013.

TABLE 8
NUMBER OF JAPANESE BUSINESS FACILITIES BY OWNERSHIP SHARE
2012

OWNERSHIP	IA	IL	IN	KS	MN	MO	ND	NE	SD	WI	10 STATES		
											Total	12/11	
												Actual	%
100%	39	551	170	39	63	72	4	37	8	44	1,027	-38	-3.6
50 – 99%	4	32	24	1	6	9	1	1	1	7	86	1	1.2
10 – 49%	2	7	9	0	2	0	0	2	0	2	24	-11	-31.4
Total	45	590	203	40	71	81	5	40	9	53	1,137	-48	-4.1

NC: Net Change.

?: Percent change over previous period.

Note: Business facilities with less than 10 percent Japanese ownership are excluded from the survey. Previous years' data was revised on July 5, 2013.