

JAPANESE DIRECT INVESTMENT: 2010 SURVEY

The Consulate General of Japan at Chicago conducts an annual survey to determine the Japanese business presence in Illinois, Indiana, Iowa, Kansas, Minnesota, Missouri, Nebraska, North Dakota, South Dakota, and Wisconsin. The ten-state area is under the jurisdiction of the Consulate.

In 2010, a total of 1,140 Japanese business facilities were counted in the survey. Retail locations are excluded. Data is as of October 1, 2010.

Source: Consulate General of Japan at Chicago

Note: Japanese business facilities include those which are ultimately 10% or more owned by a Japanese company or national.

TABLE 1
 NUMBER OF JAPANESE BUSINESS FACILITIES BY STATE AND NUMBER
 2010

YEAR	IA	IL	IN	KS	MN	MO	ND	NE	SD	WI	10 STATES	
											Total	%
2000		818	236		77					46		
2005	45	708	239	31	62	84	1	37	7	50	1,264	
2006	47	674	238	31	70	82	3	37	7	53	1,242	-1.7
2007	48	655	238	31	70	80	3	39	7	54	1,225	-1.4
2008	49	647	229	33	74	80	4	39	7	55	1,217	-0.7
2009	45	614	217	34	71	79	5	37	9	53	1,164	-4.4
2010	46	596	213	34	70	76	5	39	9	52	1,140	-2.1
10/09%	2.2	-2.9	-1.8	0.0	-1.4	-3.8	0.0	5.4	0.0	-1.9	-2.1	
10/05%	2.2	-15.8	-10.9	9.7	12.9	-9.5	400.0	5.4	28.6	4.0	-9.8	
10/00%		-27.2	-9.7		-9.1					13.0		

#: Percent change over previous period.

Note: Total Japanese business facilities includes each location for a particular company in the 10-state region. Previous year's data was revised on August 3, 2011.

BUSINESS FACILITY NUMBER

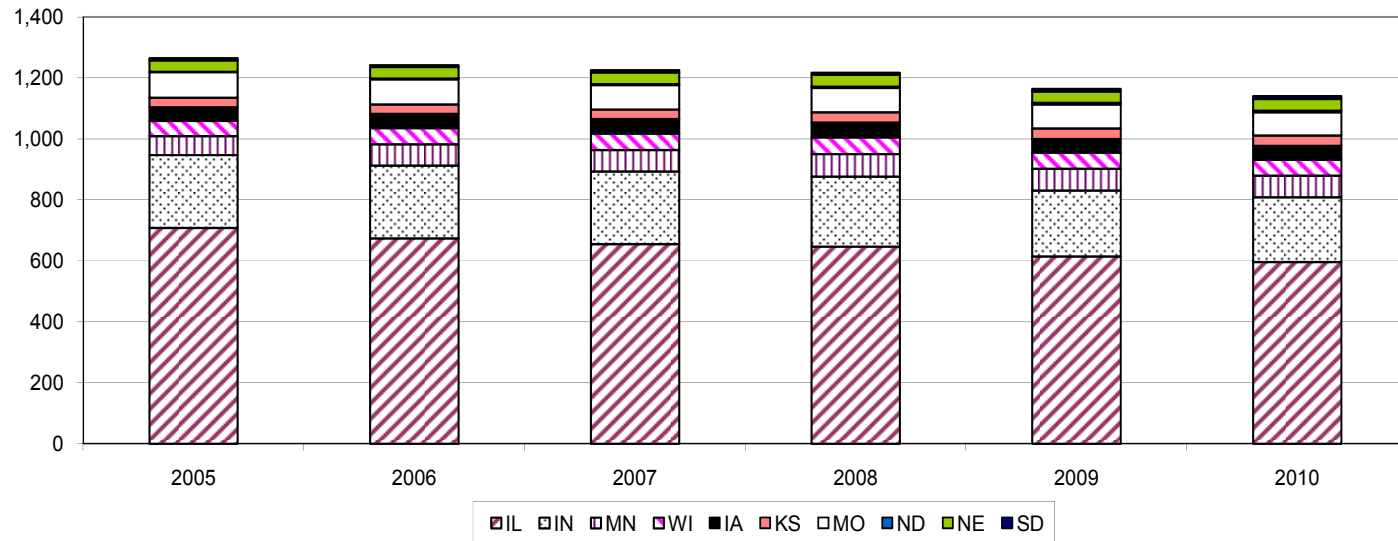


TABLE 2
JAPANESE BUSINESS FACILITY EMPLOYMENT BY TYPE AND YEAR
2010

YEAR	IA	IL	IN	KS	MN	MO	ND	NE	SD	WI	10 STATES	
											Total	%
TOTAL EMPLOYEES**												
2005	3,500	37,540	43,470	1,300	3,440	6,710	10	3,430	220	2,230	101,850	
2006	3,670	37,570	44,620	1,250	3,980	6,320	230	3,640	210	2,280	103,770	1.9
2007	4,770	38,510	45,290	1,080	4,380	6,010	260	4,300	240	2,330	107,150	3.3
2008	4,580	37,050	43,290	1,080	4,850	5,680	240	3,920	240	2,450	103,370	-3.5
2009	4,470	35,070	38,460	1,040	4,470	4,840	210	2,700	220	2,210	93,680	-9.4
2010	4,550	35,200	40,510	1,090	4,600	4,900	240	3,420	220	2,180	96,890	3.4
10/09%	1.7	0.4	5.3	4.3	3.0	1.3	14.4	26.6	0.0	-1.4	3.4	
10/05%	29.7	-6.2	-6.8	-16.4	33.8	-27.0	2875.0	-0.4	0.5	-2.2	-4.9	
LOCAL EMPLOYEES HIRED IN THE U.S.**												
2005	3,420	36,140	42,710	1,270	3,420	6,640	10	3,400	220	2,170	99,390	
2006	3,570	36,190	43,870	1,220	3,950	6,240	230	3,610	210	2,220	101,310	1.9
2007	4,700	37,120	44,530	1,050	4,340	5,940	260	4,270	230	2,270	104,700	3.3
2008	4,510	35,650	42,540	1,050	4,800	5,620	240	3,880	230	2,390	100,900	-3.6
2009	4,430	33,750	37,760	1,010	4,410	4,780	210	2,670	210	2,170	91,390	-9.4
2010	4,510	33,970	39,840	1,060	4,540	4,850	240	3,380	220	2,140	94,740	3.7
10/09%	1.8	0.7	5.5	4.7	3.1	1.4	14.4	26.8	0.5	-1.3	3.7	
10/05%	32.0	-6.0	-6.7	-16.4	32.8	-27.0	2875.0	-0.7	0.0	-1.5	-4.7	
JAPANESE EMPLOYEES ASSIGNED FROM JAPAN												
2005	80	1,400	760	40	20	70	0	30	0	60	2,450	
2006	110	1,380	750	30	20	70	0	30	0	60	2,460	0.2
2007	70	1,390	760	30	40	70	0	30	10	60	2,450	-0.3
2008	60	1,400	760	30	50	60	0	40	10	60	2,460	0.4
2009	40	1,320	700	30	60	60	0	30	10	40	2,290	-7.1
2010	30	1,230	670	30	60	50	0	40	10	40	2,150	-5.9
10/09%	-8.6	-7.0	-4.4	-6.3	-4.8	-8.6	0.0	12.5	-16.7	-2.6	-5.9	
10/05%	-61.9	-12.2	-11.2	-16.7	215.8	-27.4	0.0	28.6	25.0	-30.9	-12.2	
ACTUAL MANUFACTURING EMPLOYEES**												
2005	2,160	12,490	30,950	620	2,320	3,900	0	2,550	70	1,170	56,210	
2006	2,360	13,030	32,060	620	2,530	3,760	160	2,690	80	1,210	58,480	4.0
2007	2,900	12,420	32,250	570	2,580	3,680	180	3,370	60	1,170	59,170	1.2
2008	2,910	11,950	31,190	560	2,410	3,500	160	2,760	90	1,140	56,670	-4.2
2009	2,690	10,970	27,710	520	1,990	2,780	120	1,850	90	930	49,640	-12.4
2010	2,790	11,140	27,940	440	2,170	2,920	130	2,130	90	950	50,690	2.1
10/09%	3.7	1.5	0.8	-14.6	8.9	5.2	5.0	15.3	-2.2	2.8	2.1	
10/05%	28.9	-10.9	-9.7	-28.0	-6.6	-25.1	NA	-16.3	28.6	-18.4	-9.8	

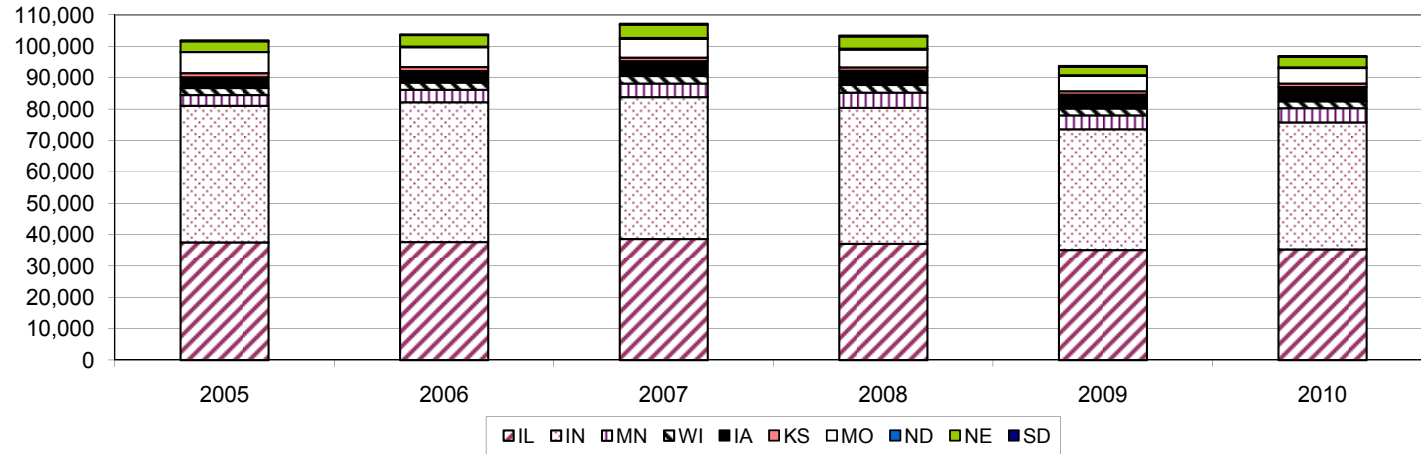
*: Due to rounding, the sum of each column may not equal the column total. The percent comparison is based upon the actual numbers.

** : The above categories include part-time employment. Actual Manufacturing indicates the number of business facilities that are involved directly in the manufacturing process.

%: Change over previous year unless otherwise specified.

Note: Previous years' data was revised on August 3, 2011.

TOTAL EMPLOYMENT



ACTUAL MANUFACTURING EMPLOYMENT

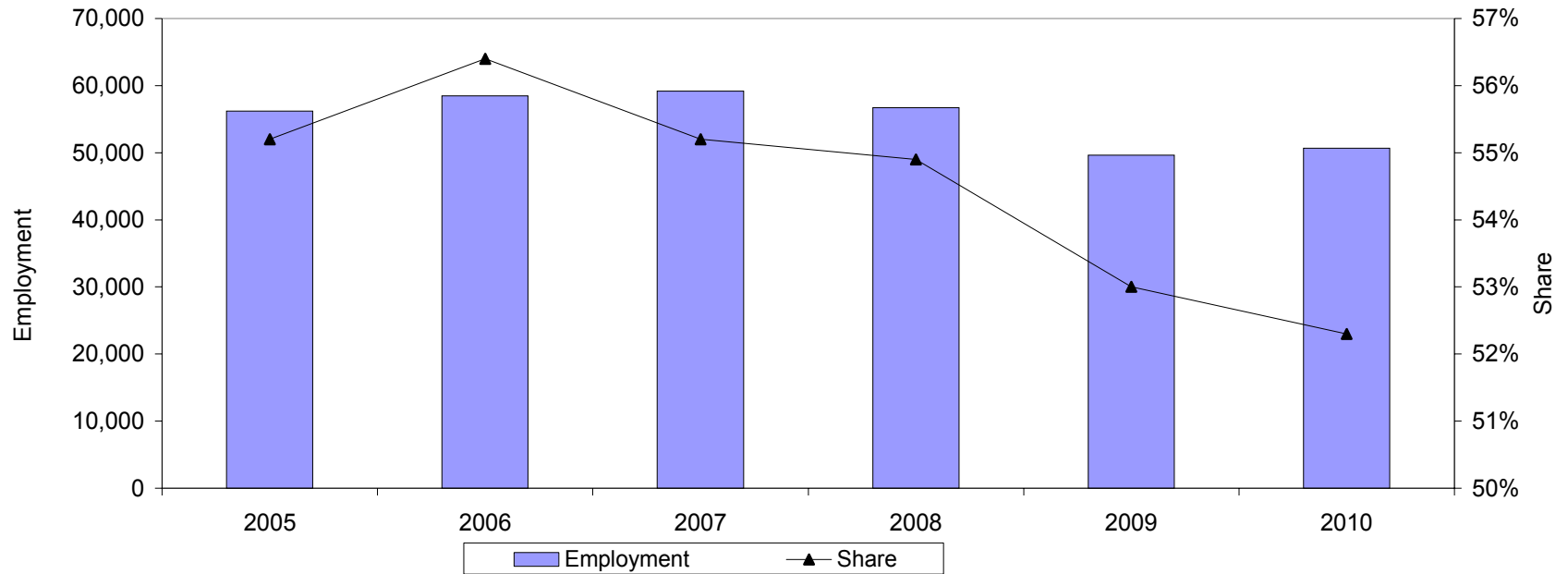


TABLE 3
NUMBER OF JAPANESE BUSINESS FACILITIES BY SECTOR
2010

INDUSTRY	IA	IL	IN	KS	MN	MO	ND	NE	SD	WI	Total	10 STATES		
												NC	10/09%	% of Total
Agriculture, Forestry and Fisheries	3	24	8	0	0	7	0	0	0	0	42	-2	-4.5	3.7
Mining	0	0	0	1	0	0	0	0	0	0	1	0	0.0	0.1
Construction	0	3	2	0	0	0	0	0	0	0	5	0	0.0	0.4
Manufacturing	37	365	171	27	48	52	5	33	9	36	783	-19	-2.4	68.7
Motor Vehicles and Parts	7	50	87	0	3	9	1	3	0	6	166	-6	-3.5	14.6
Electronics	0	76	13	1	10	3	0	2	1	3	109	-5	-4.4	9.6
Machine Tools	1	39	3	0	0	0	0	1	0	2	46	-1	-2.1	4.0
Precision Instruments	0	20	2	4	5	1	0	0	0	2	34	-1	-2.9	3.0
Other Machinery	2	57	12	1	5	2	1	0	0	3	83	-1	-1.2	7.3
Tire and Rubber	5	5	4	0	0	6	0	0	0	0	20	0	0.0	1.8
Metal and Steel	1	16	11	0	2	1	0	0	0	0	31	-1	-3.1	2.7
Food	5	12	1	0	2	3	0	2	0	3	28	0	0.0	2.5
Chemical	14	45	21	18	12	22	3	20	7	11	173	-3	-1.7	15.2
Pharmaceutical	1	5	0	0	0	0	0	0	1	0	7	0	0.0	0.6
Other	1	40	17	3	9	5	0	5	0	6	86	-1	-1.1	7.5
Actual Manufacturing*	17	119	122	8	20	17	1	8	2	16	330	-7	-2.1	29.0
Transportation and Warehouse	1	51	8	1	6	6	0	1	0	4	78	-1	-1.3	6.8
Service	1	39	7	0	7	4	0	0	0	7	65	-1	-1.5	5.7
Commercial Trade	2	82	15	4	2	7	0	5	0	2	119	0	0.0	10.4
Finance, Insurance and Real Estate	2	19	0	1	3	0	0	0	0	0	25	0	0.0	2.2
Other	0	13	2	0	4	0	0	0	0	3	22	-1	-4.3	1.9
Total	46	596	213	34	70	76	5	39	9	52	1,140	-24	-2.1	

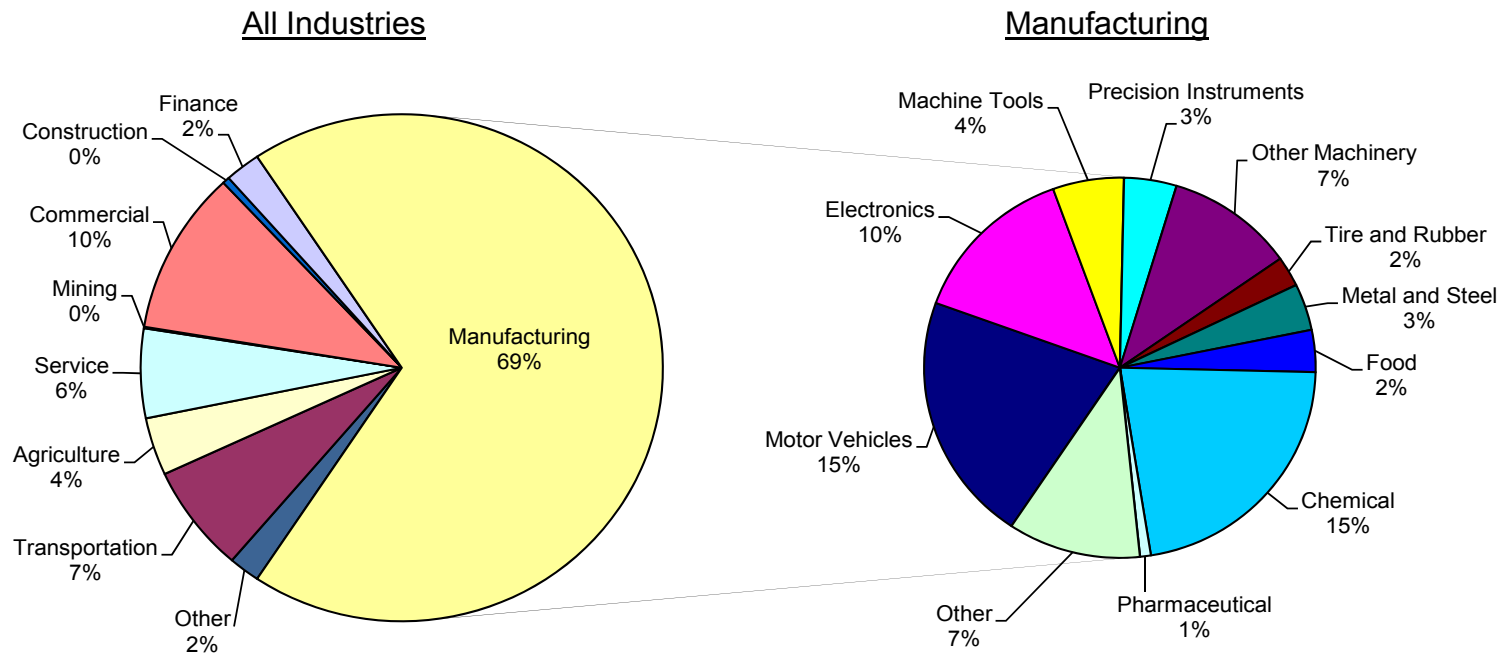
*: Actual Manufacturing indicates the number of business facilities that are involved directly in the manufacturing process.

NC: Net Change.

?: Percent change over previous period.

Note: Previous years' data was revised on August 3, 2011.

NUMBER OF JAPANESE BUSINESS FACILITIES
SHARE BY SECTOR
(10 States)



Note: Due to rounding, the sum of the sectors may not equal 100%.

TABLE 4
NUMBER OF JAPANESE BUSINESS FACILITIES BY SECTOR
2005 - 2010

INDUSTRY	10 STATES						
	2005	2006	2007	2008	2009	2010	10/09
Agriculture, Forestry and Fisheries	60	60	59	57	44	42	-4.5
Mining	1	1	1	1	1	1	0.0
Construction	5	6	6	5	5	5	0.0
Manufacturing	848	837	835	831	802	783	-2.4
Motor Vehicles and Parts	168	179	180	178	172	166	-3.5
Electronics	139	134	129	126	114	109	-4.4
Machine Tools	56	56	50	49	47	46	-2.1
Precision Instruments	35	36	37	36	35	34	-2.9
Other Machinery	93	92	92	90	84	83	-1.2
Tire and Rubber	22	22	23	21	20	20	0.0
Metal and Steel	34	35	33	33	32	31	-3.1
Food	40	29	28	28	28	28	0.0
Chemical	159	159	166	175	176	173	-1.7
Pharmaceutical	7	7	7	6	7	7	0.0
Other	95	88	90	89	87	86	-1.1
Actual Manufacturing*	337	346	341	350	337	330	-2.1
Transportation and Warehouse	89	83	83	83	79	78	-1.3
Service	69	70	67	67	66	65	-1.5
Commercial Trade	137	130	120	121	119	119	0.0
Finance, Insurance and Real Estate	32	30	29	29	25	25	0.0
Other	23	25	25	23	23	22	-4.3
Total	1,264	1,242	1,225	1,217	1,164	1,140	-2.1

*: Actual Manufacturing indicates the number of business facilities that are involved directly in the manufacturing process.

NC: Net Change.

%; Percent change over previous period.

Note: Previous years' data was revised on August 3, 2011.

TABLE 5
TOTAL EMPLOYMENT BY SECTOR
2010

INDUSTRY	IA	IL	IN	KS	MN	MO	ND	NE	SD	WI	Total	10 STATES		
												NC	10/09%	% of Total
Agriculture, Forestry and Fisheries	60	290	230	0	0	80	0	0	0	0	660	-70	-9.1	0.7
Mining	0	0	0	20	0	0	0	0	0	0	20	0	0.0	0.0
Construction	0	30	10	0	0	0	0	0	0	0	40	0	-4.9	0.0
Manufacturing	4,460	29,930	39,680	970	4,370	4,560	240	3,400	220	1,950	89,780	3,290	3.8	92.7
Motor Vehicle/Parts	670	8,750	28,880	0	80	3,070	10	2,120	0	340	43,900	2,140	5.1	45.3
Electronics	0	4,510	1,680	10	730	110	0	170	100	130	7,440	200	2.8	7.7
Machine Tools	50	1,240	30	0	0	0	0	0	0	120	1,450	170	13.3	1.5
Prec. Instruments	0	950	300	90	550	0	0	0	0	40	1,930	350	22.0	2.0
Other Machinery	280	3,450	1,540	140	580	130	210	0	0	230	6,560	230	3.6	6.8
Tire and Rubber	2,820	860	1,790	0	0	90	0	0	0	0	5,560	70	1.3	5.7
Metal and Steel	0	420	1,340	0	230	70	0	0	0	0	2,060	130	6.5	2.1
Food	360	410	1,660	0	190	160	0	320	0	300	3,390	-10	-0.4	3.5
Chemical	230	2,010	370	340	300	610	20	310	60	340	4,580	-100	-2.1	4.7
Pharmaceutical	50	5,950	0	0	0	0	0	0	50	0	6,050	0	0.0	6.2
Other	10	1,390	2,110	390	1,730	320	0	470	0	450	6,860	120	1.8	7.1
Actual Manufacturing*	2,790	11,140	27,940	440	2,170	2,920	130	2,130	90	950	50,690	1,050	2.1	52.2
Transportation and Warehouse	10	1,200	40	0	50	30	0	0	0	10	1,340	20	1.8	1.4
Service	10	700	80	0	100	70	0	0	0	150	1,100	-60	-5.2	1.1
Commercial Trade	0	1,770	440	80	20	150	0	20	0	0	2,490	-30	-1.1	2.6
Finance, Insurance and Real Estate	10	800	0	20	50	0	0	0	0	0	870	50	5.7	0.9
Other	0	490	30	0	20	0	0	0	0	60	600	10	1.2	0.6
Total	4,550	35,190	40,510	1,090	4,600	4,900	240	3,420	220	2,180	96,890	3,210	3.4	

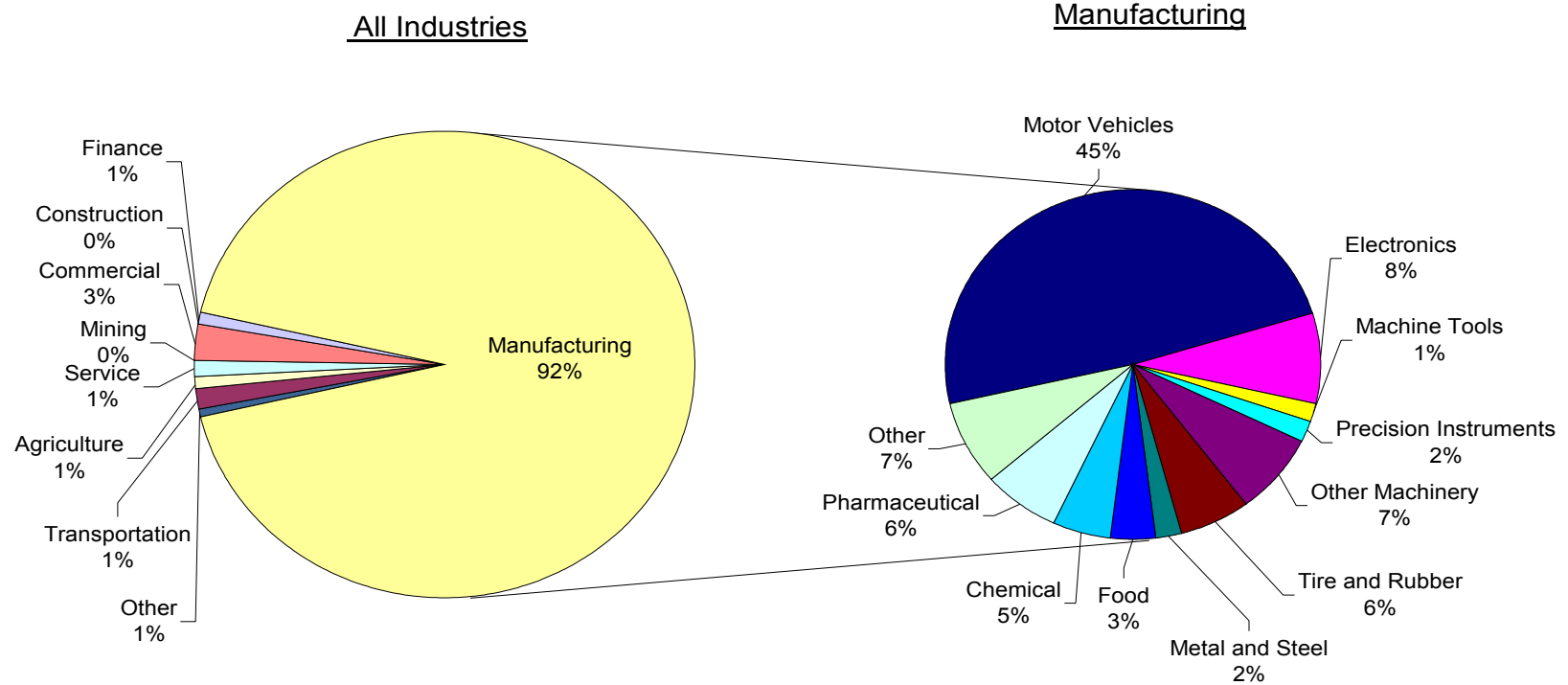
*: Actual Manufacturing Employment indicates the number of employees who are involved directly in the manufacturing process.

NC: Net Change.

?: Percent change over previous period.

Note: Due to rounding, the sum of each column may not equal the column total. Previous years' data was revised on August 3, 2011.

TOTAL EMPLOYMENT SHARE BY SECTOR (10 States)



Note: Due to rounding, the sum of the sectors may not equal 100%.

TOTAL EMPLOYMENT BY STATE AND SECTOR

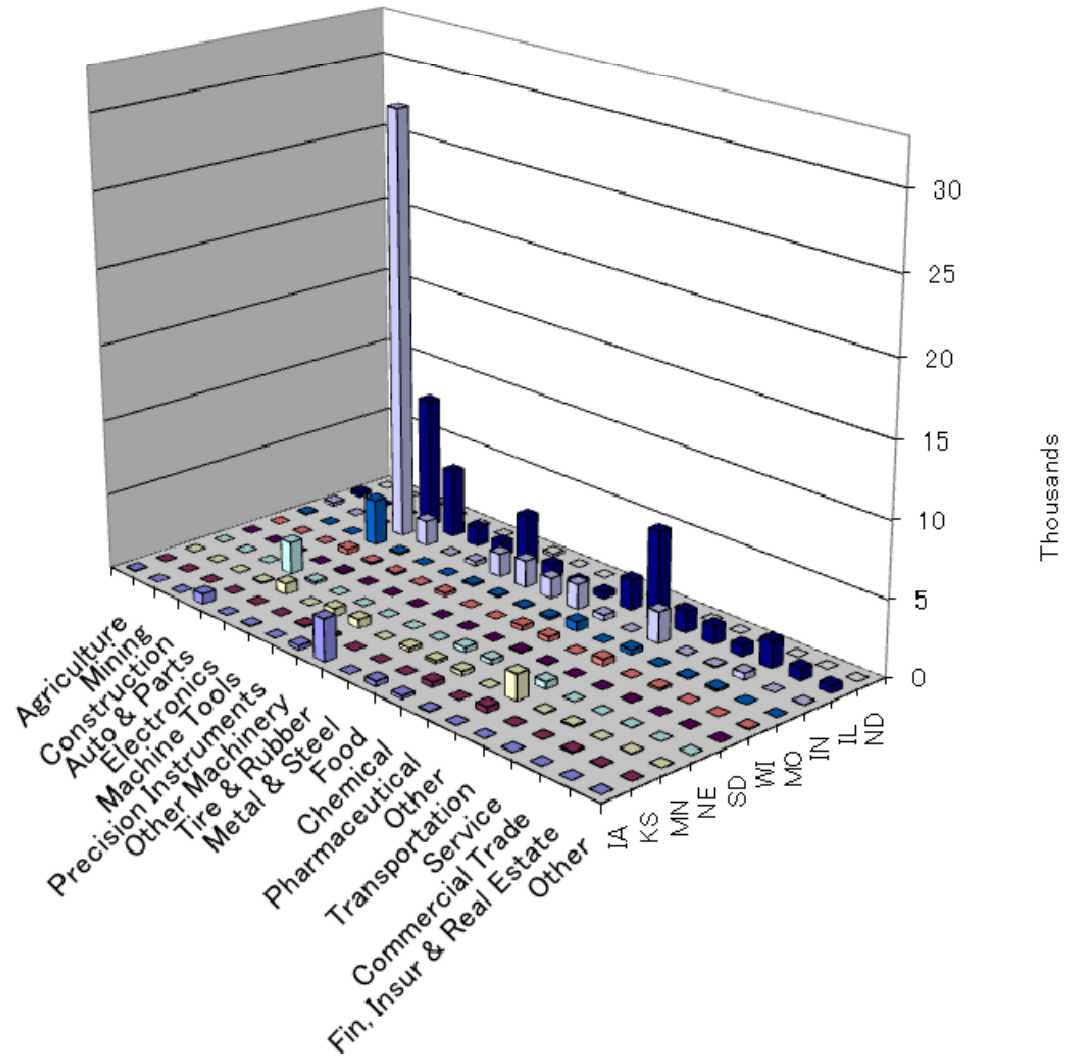


TABLE 6
TOTAL EMPLOYMENT BY SECTOR
2005 - 2010

INDUSTRY	10 STATES						
	2005	2006	2007	2008	2009	2010	10/09
Agriculture, Forestry and Fisheries	690	640	640	700	720	660	-9.1
Mining	20	20	20	20	20	20	0.0
Construction	60	60	90	60	40	40	-4.9
Manufacturing	93,750	96,390	99,950	96,270	86,490	89,780	3.8
Motor Vehicles and Parts	49,520	51,340	52,130	48,940	41,760	43,900	5.1
Electronics	6,980	7,320	7,550	7,590	7,240	7,440	2.8
Machine Tools	1,350	1,440	1,350	1,460	1,280	1,450	13.3
Precision Instruments	1,580	1,670	1,690	1,770	1,580	1,930	22.0
Other Machinery	6,470	6,800	7,110	7,090	6,330	6,560	3.6
Tire and Rubber	4,370	4,520	5,360	5,150	5,490	5,560	1.3
Metal and Steel	1,810	1,970	1,900	2,130	1,940	2,060	6.5
Food	3,500	3,160	3,290	3,300	3,410	3,390	-0.4
Chemical	4,810	4,720	4,710	4,780	4,680	4,580	-2.1
Pharmaceutical	5,510	5,560	6,590	6,000	6,050	6,050	0.0
Other	7,860	7,890	8,270	8,050	6,740	6,860	1.8
Actual Manufacturing*	56,210	58,480	59,170	56,670	49,640	50,690	2.1
Transportation and Warehouse	1,540	1,430	1,470	1,480	1,320	1,340	1.8
Service	1,560	1,360	1,080	1,100	1,160	1,100	-5.2
Commercial Trade	3,120	2,740	2,720	2,550	2,510	2,490	-1.1
Finance, Insurance and Real Estate	600	600	610	630	830	870	5.7
Other	520	520	570	560	590	600	1.2
Total	101,850	103,770	107,150	103,370	93,680	96,890	3.4

*: Actual Manufacturing Employment indicates the number of employees who are involved directly in the manufacturing process.

NC: Net Change.

%: Percent change over previous period.

Note: Due to rounding, the sum of each column may not equal the column total. Previous years' data was revised on August 3, 2011.

TABLE 7
NUMBER OF JAPANESE BUSINESS FACILITIES BY EMPLOYMENT SIZE
2010

EMPLOYEE NUMBER	IA	IL	IN	KS	MN	MO	ND	NE	SD	WI	10 STATES		
											Total	10/09	
												Actual	%
1 – 10	20	266	66	17	31	35	4	22	5	20	486	-19	-3.8
11 – 100	17	256	75	15	29	29	0	10	3	26	460	-9	-1.9
101 – 500	7	60	51	2	8	9	1	6	1	6	151	-1	-0.7
501 – 1000	1	11	13	0	1	2	0	0	0	0	28	5	21.7
1001 and Above	1	3	8	0	1	1	0	1	0	0	15	0	0.0
Total	46	596	213	34	70	76	5	39	9	52	1,140	-24	-2.1

NC: Net Change.

%: Percent change over previous period.

Note: Previous years' data was revised on August 3, 2011.

TABLE 8
NUMBER OF JAPANESE BUSINESS FACILITIES BY OWNERSHIP SHARE
2010

OWNERSHIP	IA	IL	IN	KS	MN	MO	ND	NE	SD	WI	10 STATES		
											Total	10/09	
												Actual	%
100%	38	550	179	33	59	68	5	36	8	42	1,018	-14	-1.4
50 – 99%	4	37	24	1	5	8	0	1	1	8	89	-8	-8.2
10 – 49%	4	9	10	0	6	0	0	2	0	2	33	-2	-5.7
Total	46	596	213	34	70	76	5	39	9	52	1,140	-24	-2.1

NC: Net Change.

%: Percent change over previous period.

Note: Business facilities with less than 10 percent Japanese ownership are excluded from the survey. Previous years' data was revised on August 3, 2011.