

JAPANESE DIRECT INVESTMENT: 2006 SURVEY

The Consulate General of Japan at Chicago conducts an annual survey to determine the Japanese business presence in Illinois, Indiana, Iowa, Kansas, Minnesota, Missouri, Nebraska, North Dakota, South Dakota, and Wisconsin. The ten-state area is under the jurisdiction of the Consulate.

In 2006, a total of 1,110 Japanese business facilities were counted in the survey. Retail locations are excluded. Data is as of October 1, 2006.

Source: Consulate General of Japan at Chicago

TABLE 1

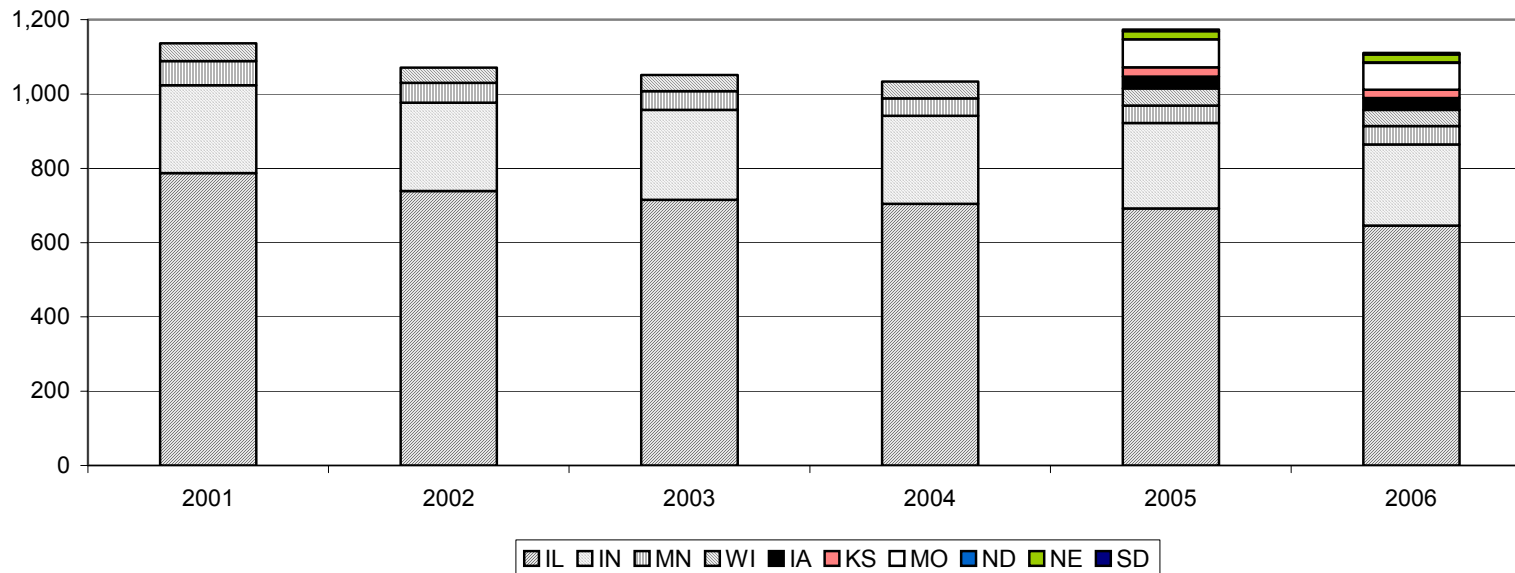
NUMBER OF JAPANESE BUSINESS FACILITIES BY STATE AND NUMBER
2006

YEAR	IA	IL	IN	KS	MN	MO	ND	NE	SD	WI	4 STATES		10 STATES	
											Total	%	Total	%
1996		836	203		71					44	1,154			
2001		787	236		66					47	1,136	-1.6		
2002		739	237		54					41	1,071	-5.7		
2003		715	242		50					44	1,051	-1.9		
2004		704	237		47					45	1,033	-1.7		
2005	32	692	230	25	47	75	0	22	4	46	1,015	-1.7	1,173	
2006	32	646	218	23	50	72	1	21	4	43	957	-5.7	1,110	-5.4
06/05%	0.0	-6.6	-5.2	-8.0	6.4	-4.0	-	-4.5	0.0	-6.5	-5.7		-5.4	
06/01%		-17.9	-7.6		-24.2					-8.5	-15.8			
06/96%		-22.7	7.4		-29.6					-2.3	-17.1			

?: Percent change over previous period.

Note: Total Japanese business facilities includes each location for a particular company in the 10-state region. Previous years' data was revised on July 20, 2007.

BUSINESS FACILITY NUMBER



Note: For 2000 to 2004, the graph includes 4 states (Illinois, Indiana, Minnesota and Wisconsin) since data is unavailable for the other 6 states. Beginning in 2005, the graph includes 10 states.

TABLE 2
JAPANESE BUSINESS FACILITY EMPLOYMENT BY TYPE AND YEAR
2006

YEAR	IA	IL	IN	KS	MN	MO	ND	NE	SD	WI	4 STATES		10 STATES	
											Total	%	Total	%
TOTAL EMPLOYEES**														
2001		46,190	41,470		3,410					3,840	94,910			
2002		40,580	39,850		3,180					1,640	85,250	-10.2		
2003		37,090	39,530		2,640					1,740	81,000	-5.0		
2004		35,750	41,830		2,580					1,990	82,150	1.4		
2005	3,290	35,400	43,110	1,030	2,940	6,940	0	2,410	180	2,020	83,470	1.6	97,310	
2006	3,450	35,230	42,780	960	3,210	6,580	220	2,640	170	2,040	83,260	-0.3	97,270	0.0
06/05%	4.9	-0.5	-0.8	-6.9	8.9	-5.3	-	9.7	-2.9	1.2	-0.3		0.0	
06/01%		-23.7	3.2		-6.1					-46.7	-12.3			
LOCAL EMPLOYEES HIRED IN THE U.S.**														
2001		44,360	40,610		3,390					3,780	92,130			
2002		38,950	39,040		3,170					1,590	82,750	-10.2		
2003		35,590	38,760		2,630					1,700	78,680	-4.9		
2004		34,280	41,100		2,570					1,940	79,890	1.5		
2005	3,210	34,010	42,370	1,000	2,930	6,870	0	2,380	170	1,960	81,270	1.7	94,890	
2006	3,340	33,890	42,060	930	3,190	6,500	220	2,610	170	1,990	81,130	-0.2	94,890	0.0
06/05%	4.2	-0.4	-0.7	-6.5	8.8	-5.4	-	9.8	-3.5	1.1	-0.2		0.0	
06/01%		-23.6	3.6		-3.9					-47.4	-11.9			
JAPANESE EMPLOYEES ASSIGNED FROM JAPAN														
2001		1,840	830		20					60	2,750			
2002		1,630	800		20					40	2,500	-9.3		
2003		1,500	770		10					40	2,320	-6.9		
2004		1,470	720		10					50	2,250	-3.0		
2005	80	1,390	740	40	10	70	0	30	0	50	2,200	-2.5	2,420	
2006	110	1,340	720	30	20	80	0	30	10	60	2,130	-3.1	2,380	-1.7
06/05%	29.3	-3.7	-3.0	-16.7	25.0	8.5	-	3.4	25.0	5.6	-3.1		-1.7	
06/01%		-27.1	-13.6		-31.8					-6.6	-22.6			
ACTUAL MANUFACTURING EMPLOYEES**														
2001		19,130	27,020		2,230					2,760	51,130			
2002		16,910	27,600		2,200					1,000	47,710	-6.7		
2003		13,680	27,680		1,740					910	44,000	-7.8		
2004		12,530	28,810		1,700					1,110	44,150	0.3		
2005	2,120	12,190	30,330	370	1,970	4,240	0	1,760	70	1,170	45,660	3.4	54,210	
2006	2,320	12,510	30,220	370	2,140	4,130	160	1,930	80	1,210	46,080	0.9	55,070	1.6
06/05%	9.4	2.6	-0.3	1.4	8.7	-2.5	-	9.5	18.6	3.3	0.9		1.6	
06/01%		-34.6	11.9		-3.9					-56.4	-9.9			

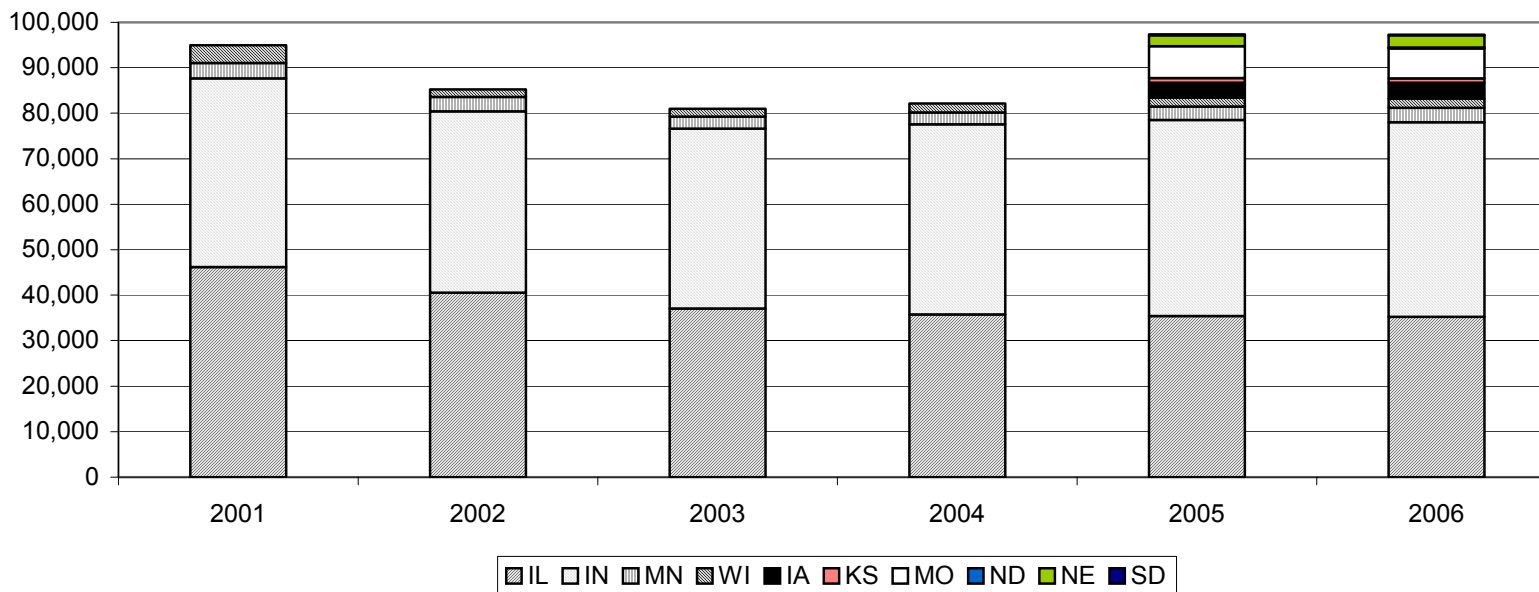
*: Due to rounding, the sum of each column may not equal the column total. The percent comparison is based upon the actual numbers.

** : The above categories include part-time employment. Actual Manufacturing indicates the number of business facilities that are involved directly in the manufacturing process.

%: Change over previous year unless otherwise specified.

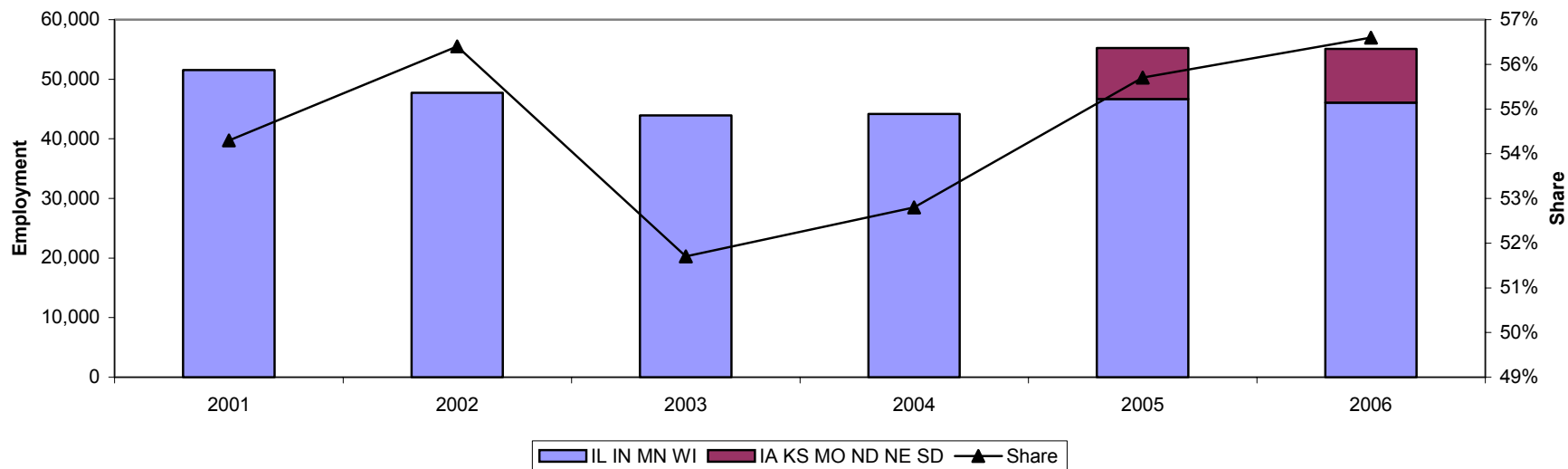
Note: Previous years' data was revised on July 20, 2007.

TOTAL EMPLOYMENT



Note: For 2000 to 2004, the graph includes 4 states (Illinois, Indiana, Minnesota and Wisconsin) since data is unavailable for the other 6 states. Beginning in 2005, the graph includes 10 states.

ACTUAL MANUFACTURING EMPLOYMENT



Note: For 2000 to 2004, the graph includes 4 states (Illinois, Indiana, Minnesota and Wisconsin) since data is unavailable for the other 6 states. Beginning in 2005, the graph includes 10 states.

TABLE 3
NUMBER OF JAPANESE BUSINESS FACILITIES BY INDUSTRY TYPE
2006

INDUSTRY	IA	IL	IN	KS	MN	MO	ND	NE	SD	WI	Total	4 STATES			Total	10 STATES		
												NC	06/05 %	% of Total		NC	06/05 %	% of Total
Agriculture, Forestry and Fisheries	0	34	10	0	0	7	0	0	0	0	44	-1	-2.2	4.6	51	-1	-1.9	4.6
Mining	0	0	0	1	0	0	0	0	0	0	0	0	0.0	0.0	1	0	0.0	0.1
Construction	0	4	2	0	0	0	0	0	0	0	6	1	20.0	0.6	6	1	20.0	0.5
Manufacturing	25	370	174	17	35	49	1	19	4	33	612	-34	-5.3	64.0	727	-36	-4.7	65.5
Motor Vehicle/Parts	7	57	88	0	3	7	0	3	0	5	153	-5	-3.2	16.0	170	-5	-2.9	15.3
Electronics	1	87	18	0	11	3	0	2	1	3	119	-5	-4.0	12.4	126	-5	-3.8	11.4
Machine Tools	2	38	5	0	0	0	0	1	0	1	44	-2	-4.3	4.6	47	-2	-4.1	4.2
Precision Instruments	0	22	1	4	3	2	0	0	0	2	28	2	7.7	2.9	34	3	9.7	3.1
Other Machinery	2	56	11	1	2	1	1	0	0	4	73	-2	-2.7	7.6	78	-2	-2.5	7.0
Tire and Rubber	2	11	4	0	0	6	0	0	0	0	15	0	0.0	1.6	23	0	0.0	2.1
Metal and Steel	0	14	13	0	1	1	0	0	0	0	28	-1	-3.4	2.9	29	-1	-3.3	2.6
Food	4	10	1	0	2	3	0	2	0	3	16	-11	-40.7	1.7	25	-11	-30.6	2.3
Chemical	4	38	23	9	8	17	0	8	3	8	77	-4	-4.9	8.1	118	-6	-4.8	10.6
Pharmaceutical	0	6	0	0	0	1	0	0	0	0	6	0	0.0	0.6	7	0	0.0	0.6
Other	3	31	10	3	5	8	0	3	0	7	53	-6	-10.2	5.5	70	-7	-9.1	6.3
Actual Manufacturing*	16	118	119	8	14	18	1	7	2	18	269	-4	-1.5	28.1	321	1	0.3	28.9
Transportation and Warehouse	1	54	7	0	6	5	0	1	0	3	70	-6	-7.9	7.3	77	-8	-9.4	6.9
Service	1	40	8	0	5	4	0	0	0	3	56	-6	-9.7	5.9	61	-6	-9.0	5.5
Commercial Trade	3	101	14	2	1	7	0	1	0	3	119	-9	-7.0	12.4	132	-10	-7.0	11.9
Finance, Insurance and Real Estate	2	25	0	3	2	0	0	0	0	0	27	-4	-12.9	2.8	32	-4	-11.1	2.9
Other	0	18	3	0	1	0	0	0	0	1	23	1	4.5	2.4	23	1	4.6	2.1
Total	32	646	218	23	50	72	1	21	4	43	957	-58	-5.7		1,110	-63	-5.4	

*: Actual Manufacturing indicates the number of business facilities that are involved directly in the manufacturing process.

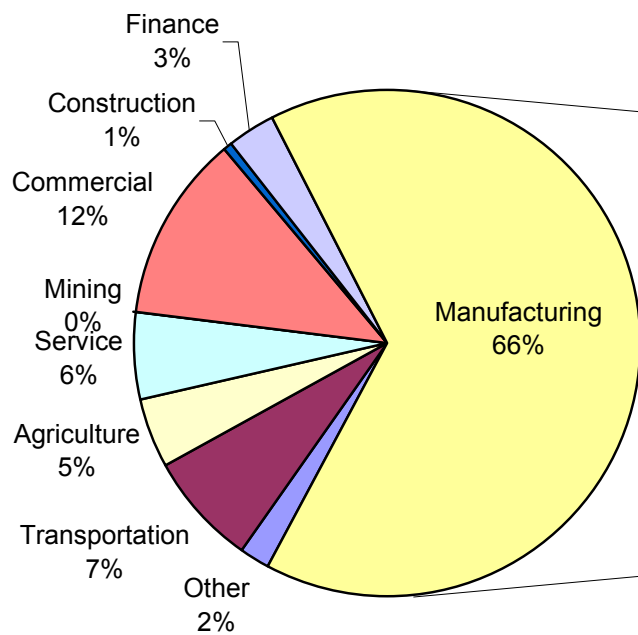
NC: Net Change.

%: Percent change over previous period.

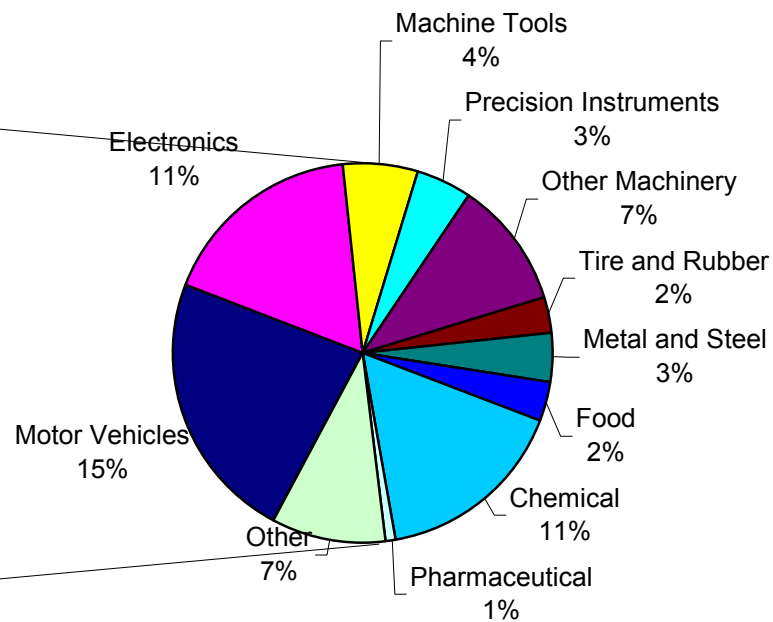
Note: Previous years' data was revised on July 20, 2007.

SHARE BY INDUSTRY TYPE (10 States)

All Industries



Manufacturing



Note: Due to rounding, the sum of the sectors may not equal 100%.

TABLE 4
TOTAL EMPLOYMENT BY INDUSTRY TYPE
2006

INDUSTRY	IA	IL	IN	KS	MN	MO	ND	NE	SD	WI	Total	4 STATES			10 STATES			
												NC	06/05 %	% of Total	Total	NC	06/05 %	% of Total
Agriculture, Forestry and Fisheries	0	330	160	0	0	70	0	0	0	0	490	-50	-9.7	0.6	560	-50	-8.3	0.6
Mining	0	0	0	20	0	0	0	0	0	0	0	0	0.0	0.0	20	0	0.0	0.0
Construction	0	40	20	0	0	0	0	0	0	0	60	10	8.5	0.1	60	10	8.5	0.1
Manufacturing	3,420	28,760	42,100	750	3,050	5,970	220	2,640	170	1,940	75,840	620	0.8	91.1	89,000	970	1.1	91.5
Motor Vehicle/Parts	1,000	11,070	32,200	0	1,740	3,140	0	1,740	0	310	45,320	490	1.1	54.4	51,200	710	1.4	52.6
Electronics	130	3,940	1,540	0	610	110	0	210	110	120	6,210	110	1.7	7.5	6,780	60	0.9	7.0
Machine Tools	60	1,020	50	0	0	0	0	10	0	10	1,070	50	5.2	1.3	1,140	60	5.6	1.2
Precision Instruments	0	900	10	90	110	20	0	0	0	150	1,170	120	11.4	1.4	1,280	130	11.5	1.3
Other Machinery	160	2,980	1,590	130	40	1,010	220	0	0	220	4,820	-80	-1.7	5.8	6,330	150	2.4	6.5
Tire and Rubber	1,660	1,280	1,570	0	0	20	0	0	0	0	2,840	150	5.7	3.4	4,520	150	3.5	4.7
Metal and Steel	0	420	1,510	0	80	70	0	0	0	0	2,000	130	7.0	2.4	2,070	130	6.6	2.1
Food	220	310	1,600	0	180	180	0	190	0	370	2,460	-250	-9.4	3.0	3,050	-340	-10.0	3.1
Chemical	70	2,100	410	420	210	460	0	60	60	290	3,020	140	4.9	3.6	4,080	-60	-1.5	4.2
Pharmaceutical	0	3,520	0	0	0	140	0	0	0	0	3,520	150	4.6	4.2	3,660	140	4.0	3.8
Other	120	1,220	1,620	110	90	820	0	440	0	470	3,400	-380	-10.0	4.1	4,890	-170	-3.4	5.0
Actual Manufacturing*	2,320	12,510	30,220	370	2,140	4,130	160	1,930	80	1,210	46,080	430	0.9	55.3	55,070	860	1.6	56.6
Transportation and Warehouse	10	1,270	40	0	40	30	0	0	0	10	1,360	-130	-8.5	1.6	1,400	-150	-9.4	1.4
Service	0	1,730	130	0	90	320	0	0	0	80	2,040	-240	-10.4	2.5	2,350	-230	-9.0	2.4
Commercial Trade	20	2,280	290	90	0	190	0	0	0	10	2,580	-400	-13.5	3.1	2,880	-550	-16.1	3.0
Finance, Insurance and Real Estate	10	570	0	110	20	0	0	0	0	0	600	-20	-2.8	0.7	710	-30	-3.8	0.7
Other	0	240	40	0	0	0	0	0	0	0	290	0	-1.4	0.3	290	0	-1.4	0.3
Total	3,450	35,230	42,780	960	3,210	6,580	220	2,640	170	2,040	83,260	-210	-0.3		97,270	-40	0.0	

*: Actual Manufacturing Employment indicates the number of employees who are involved directly in the manufacturing process.

NC: Net Change.

%: Percent change over previous period.

Note: Due to rounding, the sum of each column may not equal the column total. Previous years' data was revised on July 20, 2007.

TOTAL EMPLOYMENT BY STATE AND SECTOR

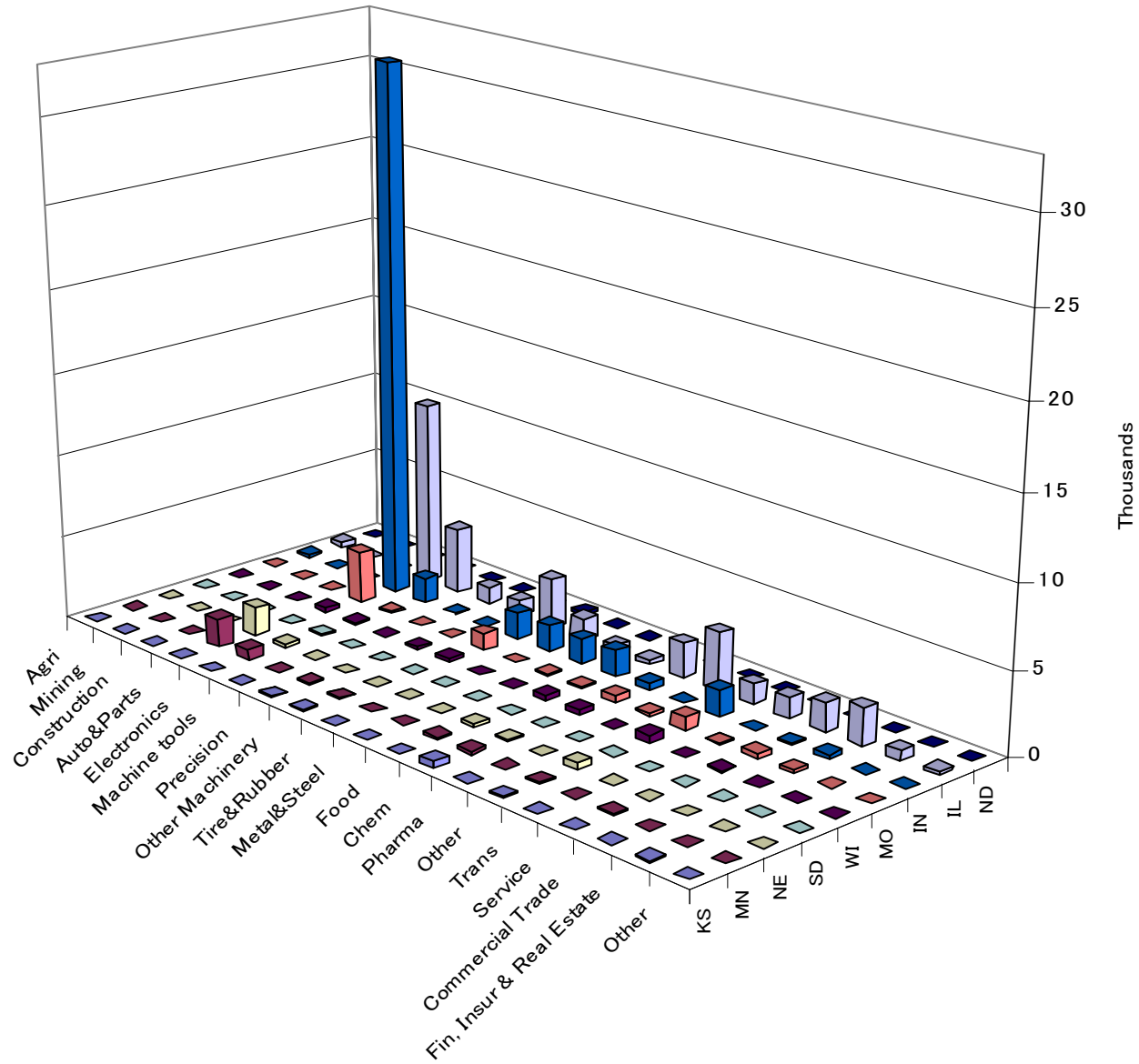


TABLE 5
TOTAL BUSINESS FACILITIES BY INDUSTRY TYPE
2001 - 2006

INDUSTRY	4 STATES							10 STATES		
	2001	2002	2003	2004	2005	2006	06/05	2005	2006	06/05
Agriculture, Forestry and Fisheries	42	42	43	45	45	44	-2.2	52	51	-1.9
Mining	0	0	0	0	0	0	0.0	1	1	0.0
Construction	9	9	8	7	5	6	20.0	5	6	20.0
Manufacturing	700	675	670	660	646	612	-5.3	763	727	-4.7
Motor Vehicles and Parts	157	155	157	159	158	153	-3.2	175	170	-2.9
Electronics	137	129	133	125	124	119	-4.0	131	126	-3.8
Machine Tools	49	48	49	48	46	44	-4.3	49	47	-4.1
Precision Instruments	31	28	27	28	26	28	7.7	31	34	9.7
Other Machinery	82	78	75	76	75	73	-2.7	80	78	-2.5
Tire and Rubber	15	14	15	16	15	15	0.0	23	23	0.0
Metal and Steel	39	36	28	27	29	28	-3.4	30	29	-3.3
Food	28	27	27	28	27	16	-40.7	36	25	-30.6
Chemical	92	90	90	84	81	77	-4.9	124	118	-4.8
Pharmaceutical	6	6	5	6	6	6	0.0	7	7	0.0
Other	64	64	64	63	59	53	-10.2	77	70	-9.1
Actual Manufacturing*	300	288	282	277	273	269	-1.5	320	321	0.3
Transportation and Warehouse	89	82	77	75	76	70	-7.9	85	77	-9.4
Service	79	67	67	68	62	56	-9.7	67	61	-9.0
Commercial Trade	146	137	130	127	128	119	-7.0	142	132	-7.0
Finance, Insurance and Real Estate	43	37	35	31	31	27	-12.9	36	32	-11.1
Other	28	22	21	20	22	23	4.5	22	23	4.6
Total	1,136	1,071	1,051	1,033	1,015	957	-5.7	1,173	1,110	-5.4

*: Actual Manufacturing indicates the number of business facilities that are involved directly in the manufacturing process.

NC: Net Change.

%: Percent change over previous period.

Note: Previous years' data was revised on July 20, 2007.

TABLE 6
TOTAL EMPLOYMENT BY INDUSTRY TYPE
2001 - 2006

INDUSTRY	4 STATES							10 STATES		
	2001	2002	2003	2004	2005	2006	06/05	2005	2006	06/05
Agriculture, Forestry and Fisheries	520	530	530	550	550	490	-9.7	610	560	-8.3
Mining	0	0	0	0	0	0	0.0	20	20	0.0
Construction	170	130	120	80	60	60	8.5	60	60	8.5
Manufacturing	82,550	76,590	72,580	73,740	75,220	75,840	0.8	88,040	89,000	1.1
Motor Vehicles and Parts	41,500	41,090	42,320	43,630	44,830	45,320	1.1	50,490	51,200	1.4
Electronics	8,300	6,200	6,190	5,740	6,110	6,210	1.7	6,720	6,780	0.9
Machine Tools	1,000	960	950	940	1,020	1,070	5.2	1,080	1,140	5.6
Precision Instruments	1,420	1,400	1,270	1,250	1,050	1,170	11.4	1,150	1,280	11.5
Other Machinery	5,760	5,180	5,040	5,030	4,900	4,820	-1.7	6,190	6,330	2.4
Tire and Rubber	5,140	2,950	2,800	2,590	2,690	2,840	5.7	4,370	4,520	3.5
Metal and Steel	7,100	6,730	1,830	1,870	1,870	2,000	7.0	1,950	2,070	6.6
Food	2,790	2,790	2,880	2,780	2,710	2,460	-9.4	3,390	3,050	-10.0
Chemical	3,520	3,050	2,950	2,840	2,880	3,020	4.9	4,150	4,080	-1.5
Pharmaceutical	2,210	2,590	2,720	3,210	3,370	3,520	4.6	3,520	3,660	4.0
Other	3,810	3,650	3,650	3,850	3,780	3,400	-10.0	5,060	4,890	-3.4
Actual Manufacturing*	51,520	47,710	43,950	44,150	45,660	46,080	0.9	54,210	55,070	1.6
Transportation and Warehouse	1,650	1,400	1,360	1,410	1,490	1,360	-8.5	1,540	1,400	-9.4
Service	3,070	2,410	2,500	2,490	2,270	2,040	-10.4	2,590	2,350	-9.0
Commercial Trade	5,840	3,110	2,960	2,970	2,990	2,580	-13.5	3,430	2,880	-16.1
Finance, Insurance and Real Estate	860	820	690	640	610	600	-2.8	740	710	-3.8
Other	260	260	250	270	290	290	-1.4	290	290	-1.4
Total	94,910	85,250	81,000	82,150	83,470	83,260	-0.3	97,310	97,270	0.0

*: Actual Manufacturing Employment indicates the number of employees who are involved directly in the manufacturing process.

NC: Net Change.

%: Percent change over previous period.

Note: Due to rounding, the sum of each column may not equal the column total. Previous years' data was revised on July 20, 2007.

TABLE 7
NUMBER OF JAPANESE BUSINESS FACILITIES BY EMPLOYMENT SIZE
2006

EMPLOYEE NUMBER	IA	IL	IN	KS	MN	MO	ND	NE	SD	WI	Total	4 STATES		Total	10 STATES	
												06/05			06/05	
												Actual	%		Actual	%
1 – 10	13	300	66	8	26	35	0	12	2	17	409	-31	-7.0	479	-35	-6.8
11 – 100	13	266	74	13	21	22	0	3	1	19	380	-26	-6.4	432	-29	-6.3
101 – 500	4	65	59	2	2	12	1	5	1	7	133	-3	-2.2	158	-1	-0.6
501 – 1000	1	11	11	0	0	0	0	0	0	0	22	0	0.0	23	-1	-4.2
1001 and Above	1	4	8	0	1	3	0	1	0	0	13	2	18.2	18	3	20.0
Total	32	646	218	23	50	72	1	21	4	43	957	-58	-5.7	1,110	-63	-5.4

NC: Net Change.

?: Percent change over previous period.

Note: Previous years' data was revised on July 20, 2007.

TABLE 8
NUMBER OF JAPANESE BUSINESS FACILITIES BY OWNERSHIP SHARE
2006

OWNERSHIP	IA	IL	IN	KS	MN	MO	ND	NE	SD	WI	Total	4 STATES		Total	06/05	
												06/05			06/05	
												Actual	%		Actual	%
100%	24	588	179	21	41	61	0	20	4	35	843	-42	-4.7	973	-46	-4.5
50 – 99%	4	44	28	2	6	10	1	0	0	6	84	-4	-4.5	101	-5	-3.8
10 – 49%	4	14	11	0	3	1	0	1	0	2	30	-12	-28.6	36	-12	-25.0
Total	32	646	218	23	50	72	1	21	4	43	957	-58	-5.7	1,110	-63	-5.4

NC: Net Change.

?: Percent change over previous period.

Note: Business facilities with less than 10 percent Japanese ownership are excluded from the survey. Previous years' data was revised on July 20, 2007.